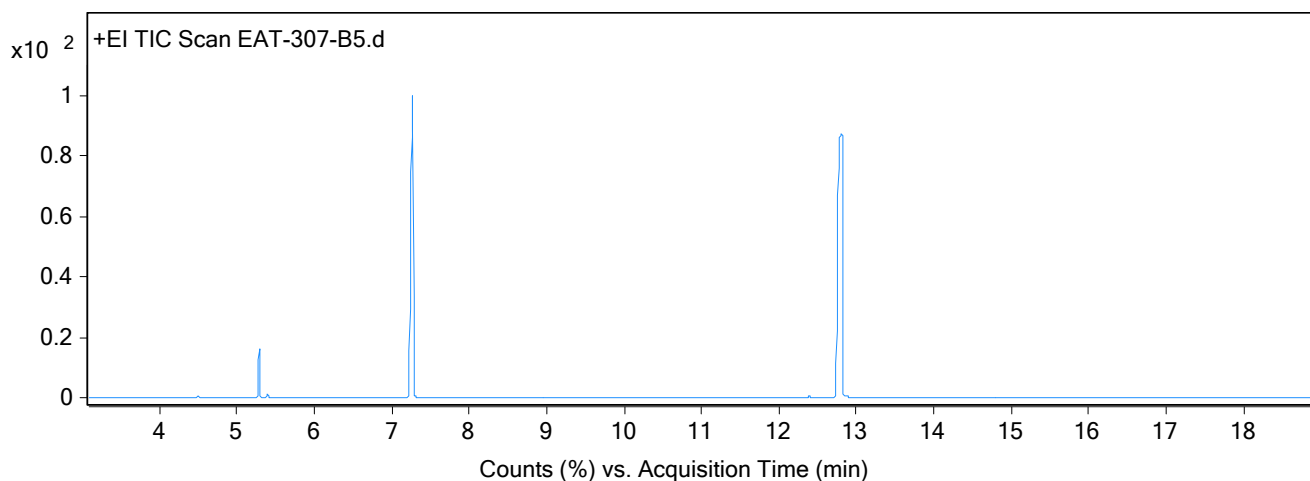


Qualitative Analysis Report

Data File	EAT-307-B5.D	Sample Name	EAT-307-B5
Sample Type		Position	10
Instrument Name	ThatWay	User Name	EAT
Acq Method	Standard.M	Acquired Time	7/26/2025 6:07:52 PM (UTC+01:00)
IRM Calibration Status	Not Applicable	DA Method	Default.m
Comment			
Expected Barcode			
Dual Inj Vol	1	Sample Amount	
TunePath	D:\MassHunter\GCMS\1\5977\	TuneName	ATUNE.U
MSFirmwareVersion	6.00.34	TuneDateStamp	2025-05-14T11:46:32+01:00
RunCompletedFlag	True	OperatorName	EAT
Acquisition SW Version	MassHunter GC/MS Acquisition B.07.06.2704 18-Jul-2017 Copyright © 1989-2017 Agilent Technologies, Inc.	Acquisition Time (Local)	7/26/2025 6:07:52 PM (UTC+01:00)
SingleQuadrupole Firmware Version	6.00.34	SingleQuadrupole Driver Version	7.6.0.0

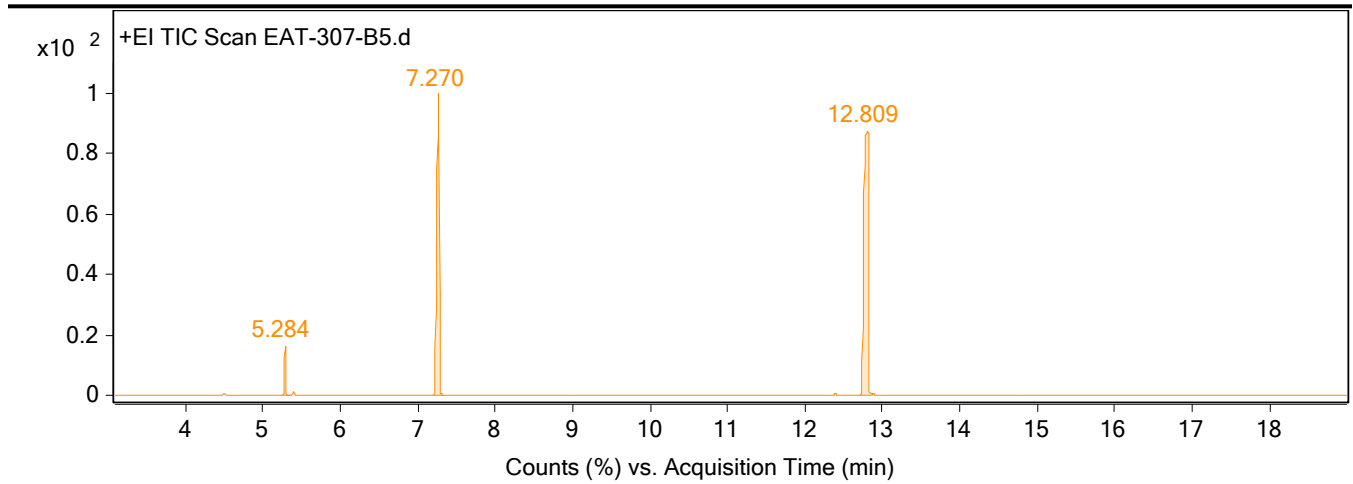
Chromatograms

Fragmentor Voltage **Collision Energy** 0 **Ionization Mode** EI



Fragmentor Voltage **Collision Energy** 0 **Ionization Mode** EI

Qualitative Analysis Report



Integration Peak List

Peak	Start	RT	End	Height	Area	Area %
1	5.245	5.284	5.359	6208698.7	8424763.2	6.28
2	7.196	7.27	7.344	38859607.89	86293089.54	64.35
3	12.706	12.809	12.883	33965857.66	134093136.32	100

--- End Of Report ---