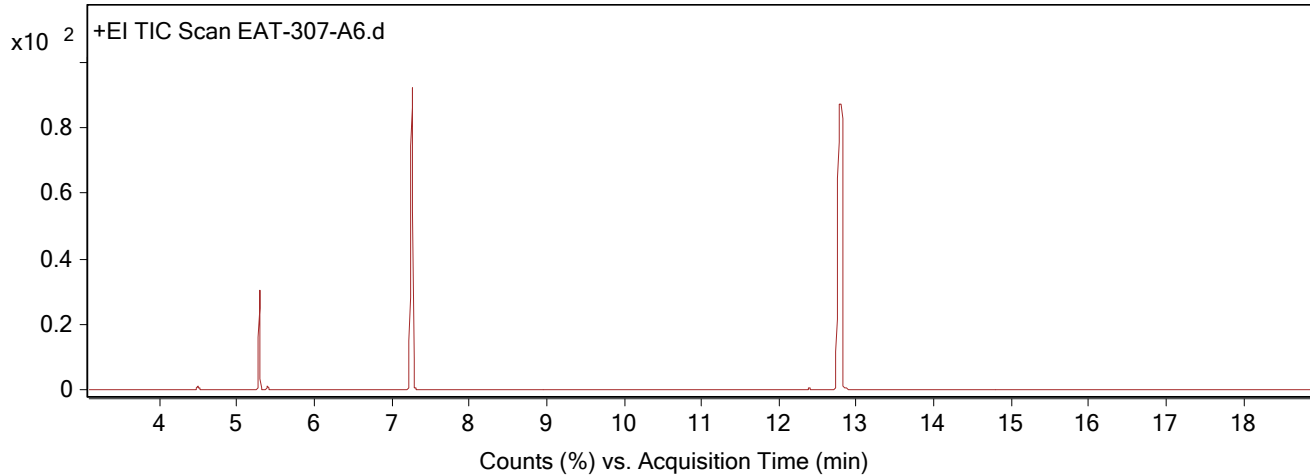


Qualitative Analysis Report

Data File	EAT-307-A6.D	Sample Name	EAT-307-A6
Sample Type		Position	11
Instrument Name	ThatWay	User Name	EAT
Acq Method	Standard.M	Acquired Time	7/26/2025 6:30:41 PM (UTC+01:00)
IRM Calibration Status	Not Applicable	DA Method	Default.m
Comment			
Expected Barcode			
Dual Inj Vol	1	Sample Amount	
TunePath	D:\MassHunter\GCMS\1\5977\	TuneName	ATUNE.U
MSFirmwareVersion	6.00.34	TuneDateStamp	2025-05-14T11:46:32+01:00
RunCompletedFlag	True	OperatorName	EAT
Acquisition SW Version	MassHunter GC/MS Acquisition B.07.06.2704 18-Jul-2017 Copyright © 1989-2017 Agilent Technologies, Inc.	Acquisition Time (Local)	7/26/2025 6:30:41 PM (UTC+01:00)
SingleQuadrupole Firmware Version	6.00.34	SingleQuadrupole Driver Version	7.6.0.0

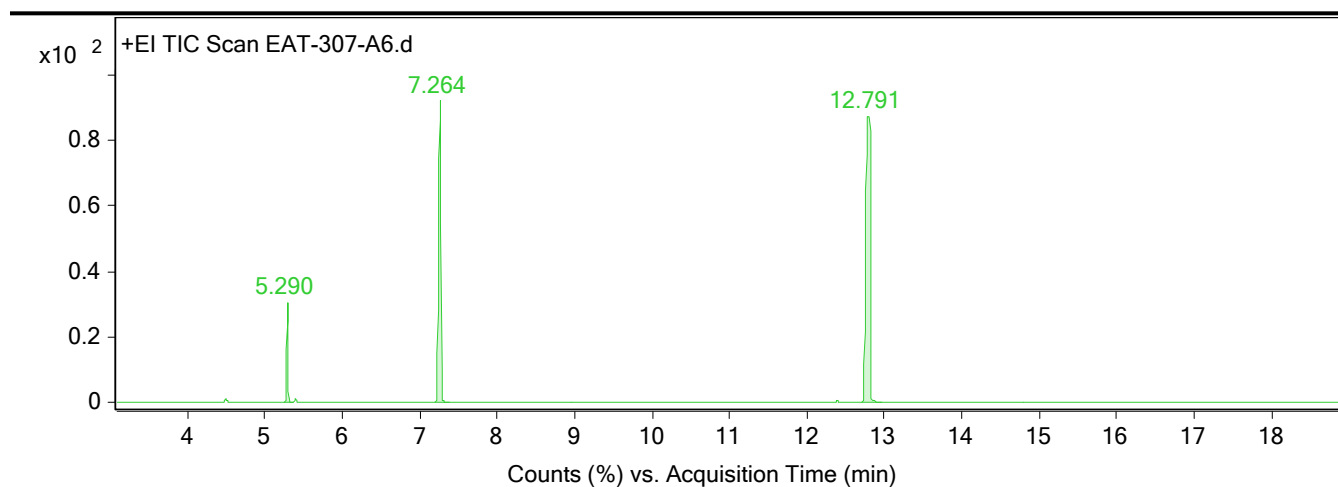
Chromatograms

Fragmentor Voltage **Collision Energy** 0 **Ionization Mode** EI



Fragmentor Voltage **Collision Energy** 0 **Ionization Mode** EI

Qualitative Analysis Report



Integration Peak List

Peak	Start	RT	End	Height	Area	Area %
1	5.244	5.29	5.364	11843227.01	17085622.64	13.11
2	7.195	7.264	7.373	35867279.54	75896483.52	58.24
3	12.706	12.791	12.969	33958628.06	130322123.63	100

--- End Of Report ---