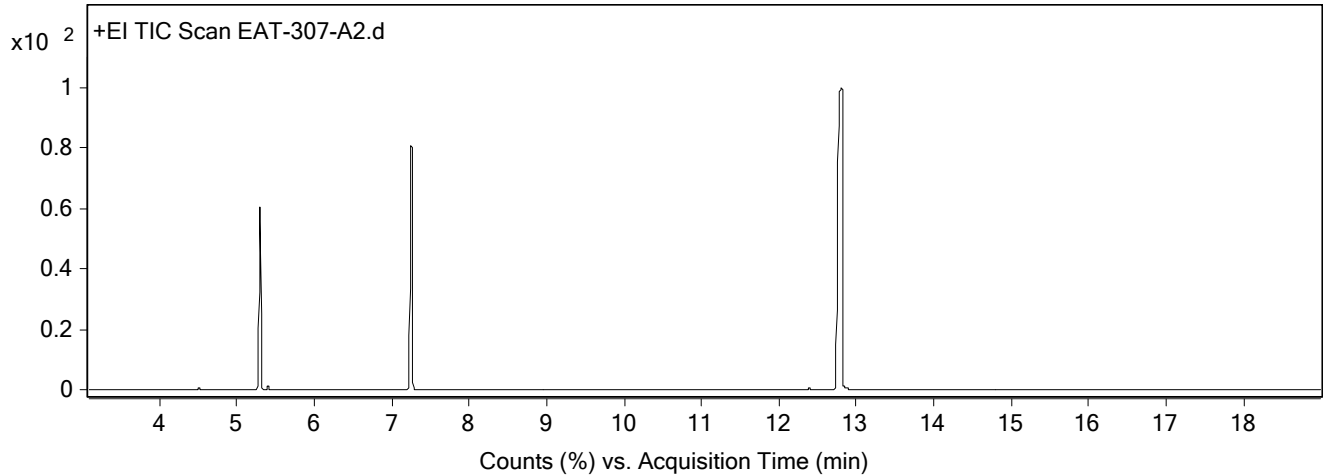


Qualitative Analysis Report

Data File	EAT-307-A2.D	Sample Name	EAT-307-A2
Sample Type		Position	3
Instrument Name	ThatWay	User Name	EAT
Acq Method	Standard.M	Acquired Time	7/26/2025 3:28:01 PM (UTC+01:00)
IRM Calibration Status	Not Applicable	DA Method	Default.m
Comment			
Expected Barcode			
Dual Inj Vol	1	Sample Amount	
TunePath	D:\MassHunter\GCMS\1\5977\	TuneName	ATUNE.U
MSFirmwareVersion	6.00.34	TuneDateStamp	2025-05-14T11:46:32+01:00
RunCompletedFlag	True	OperatorName	EAT
Acquisition SW Version	MassHunter GC/MS Acquisition B.07.06.2704 18-Jul-2017 Copyright © 1989-2017 Agilent Technologies, Inc.	Acquisition Time (Local)	7/26/2025 3:28:01 PM (UTC+01:00)
SingleQuadrupole Firmware Version	6.00.34	SingleQuadrupole Driver Version	7.6.0.0

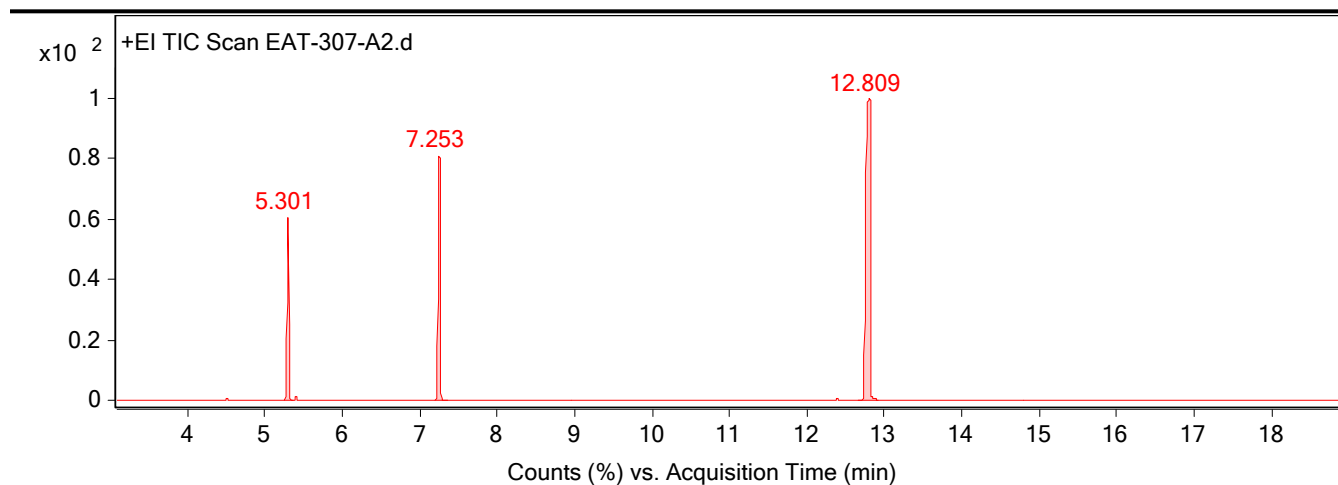
Chromatograms

Fragmentor Voltage **Collision Energy** 0 **Ionization Mode** EI



Fragmentor Voltage **Collision Energy** 0 **Ionization Mode** EI

Qualitative Analysis Report

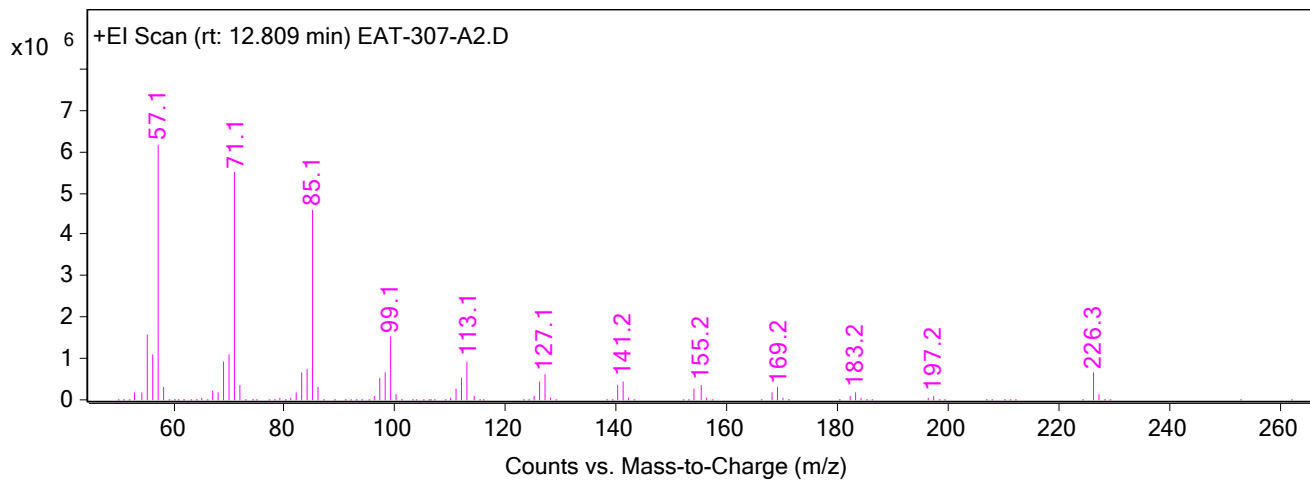


Integration Peak List

Peak	Start	RT	End	Height	Area	Area %
1	5.244	5.301	5.37	20477843.26	36615788.92	26.49
2	7.198	7.253	7.361	27258021.1	48007258.65	34.73
3	12.671	12.809	12.917	33853515	138227833.95	100

Spectra

Fragmentor Voltage Collision Energy Ionization Mode
0 EI



Peak List

m/z	z	Abund
55.1		1580283.63
56.1		1090214.75
57.1	1	6184737
69.1		932144.5
70.1		1074403.13
71.1	1	5500182.5
84.1		757823.31
85.1	1	4575775

Qualitative Analysis Report

99.1	1	1526092
113.1	1	925605.5

--- End Of Report ---