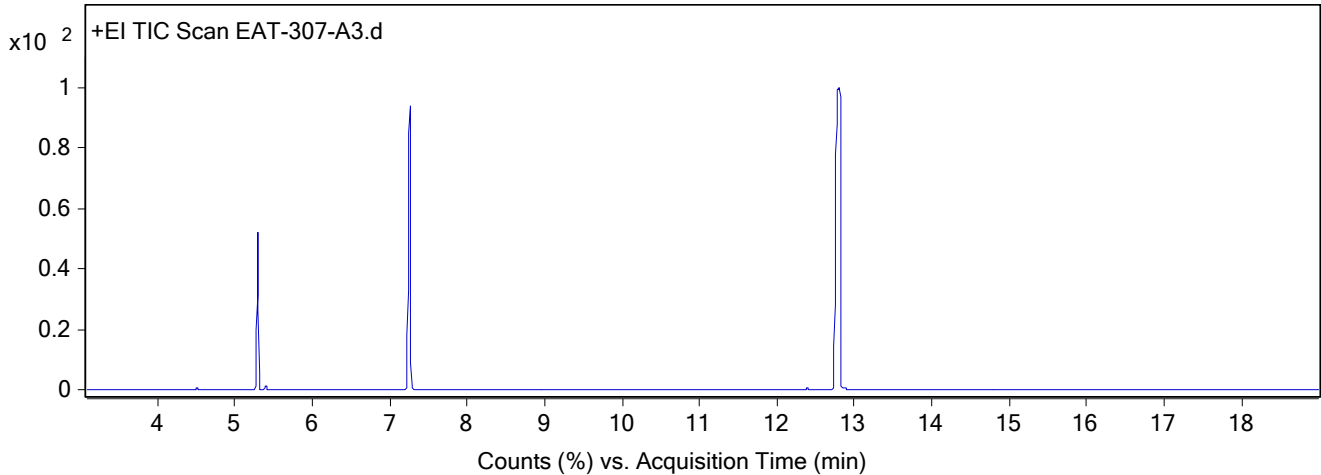


## Qualitative Analysis Report

<b>Data File</b>	EAT-307-A3.D	<b>Sample Name</b>	EAT-307-A3
<b>Sample Type</b>		<b>Position</b>	5
<b>Instrument Name</b>	ThatWay	<b>User Name</b>	EAT
<b>Acq Method</b>	Standard.M	<b>Acquired Time</b>	7/26/2025 4:13:41 PM (UTC+01:00)
<b>IRM Calibration Status</b>	Not Applicable	<b>DA Method</b>	Default.m
<b>Comment</b>			
<b>Expected Barcode</b>			
<b>Dual Inj Vol</b>	1	<b>Sample Amount</b>	
<b>TunePath</b>	D:\MassHunter\GCMS\1\5977\	<b>TuneName</b>	ATUNE.U
<b>MSFirmwareVersion</b>	6.00.34	<b>TuneDateStamp</b>	2025-05-14T11:46:32+01:00
<b>RunCompletedFlag</b>	True	<b>OperatorName</b>	EAT
<b>Acquisition SW Version</b>	MassHunter GC/MS Acquisition B.07.06.2704 18-Jul-2017 Copyright © 1989-2017 Agilent Technologies, Inc.	<b>Acquisition Time (Local)</b>	7/26/2025 4:13:41 PM (UTC+01:00)
<b>SingleQuadrupole Firmware Version</b>	6.00.34	<b>SingleQuadrupole Driver Version</b>	7.6.0.0

## Chromatograms

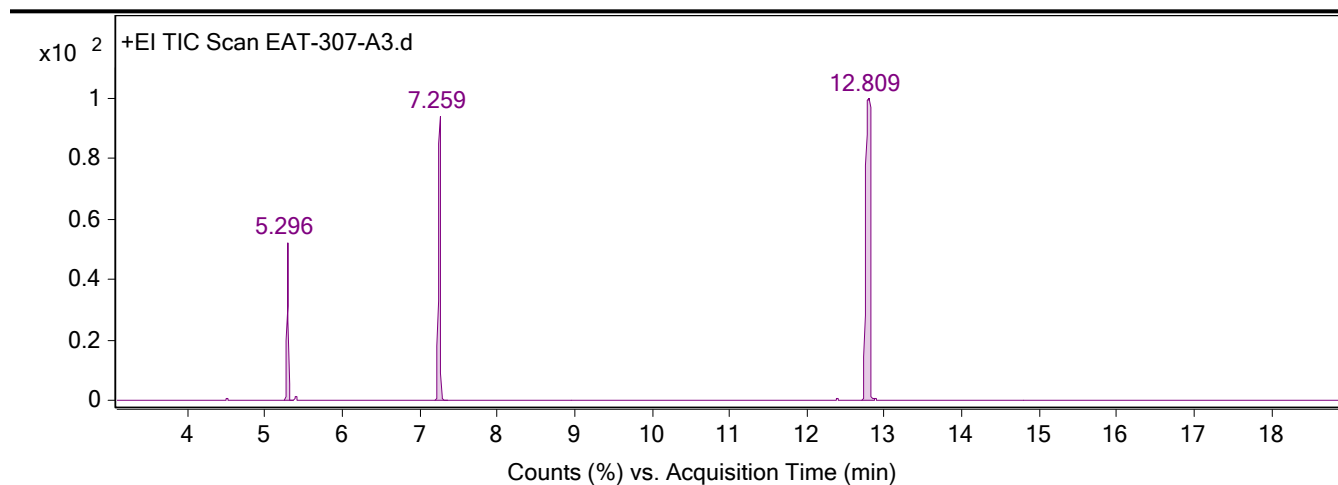
**Fragmentor Voltage**   **Collision Energy** 0   **Ionization Mode** EI



**Fragmentor Voltage**   **Collision Energy** 0   **Ionization Mode** EI



## Qualitative Analysis Report



### Integration Peak List

Peak	Start	RT	End	Height	Area	Area %
1	5.244	5.296	5.37	17559975.84	28541338.02	21.6
2	7.196	7.259	7.367	31863314.05	59596533.68	45.1
3	12.706	12.809	12.883	33871656.13	132139027.31	100

--- End Of Report ---