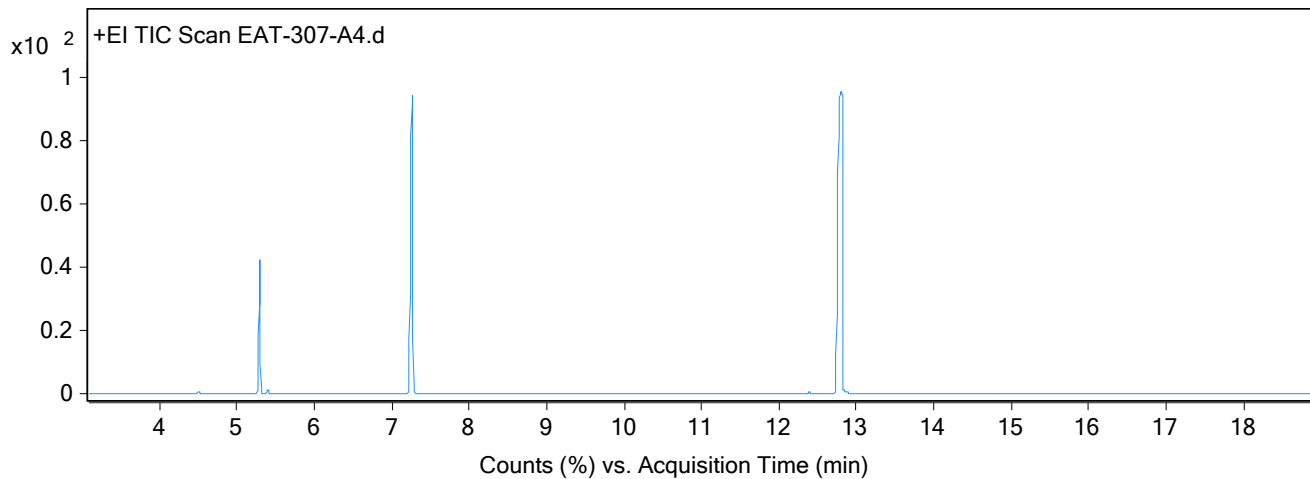


## Qualitative Analysis Report

<b>Data File</b>	EAT-307-A4.D	<b>Sample Name</b>	EAT-307-A4
<b>Sample Type</b>		<b>Position</b>	7
<b>Instrument Name</b>	ThatWay	<b>User Name</b>	EAT
<b>Acq Method</b>	Standard.M	<b>Acquired Time</b>	7/26/2025 4:59:23 PM (UTC+01:00)
<b>IRM Calibration Status</b>	Not Applicable	<b>DA Method</b>	Default.m
<b>Comment</b>			
<b>Expected Barcode</b>			
<b>Dual Inj Vol</b>	1	<b>Sample Amount</b>	
<b>TunePath</b>	D:\MassHunter\GCMS\1\5977\	<b>TuneName</b>	ATUNE.U
<b>MSFirmwareVersion</b>	6.00.34	<b>TuneDateStamp</b>	2025-05-14T11:46:32+01:00
<b>RunCompletedFlag</b>	True	<b>OperatorName</b>	EAT
<b>Acquisition SW Version</b>	MassHunter GC/MS Acquisition B.07.06.2704 18-Jul-2017 Copyright © 1989-2017 Agilent Technologies, Inc.	<b>Acquisition Time (Local)</b>	7/26/2025 4:59:23 PM (UTC+01:00)
<b>SingleQuadrupole Firmware Version</b>	6.00.34	<b>SingleQuadrupole Driver Version</b>	7.6.0.0

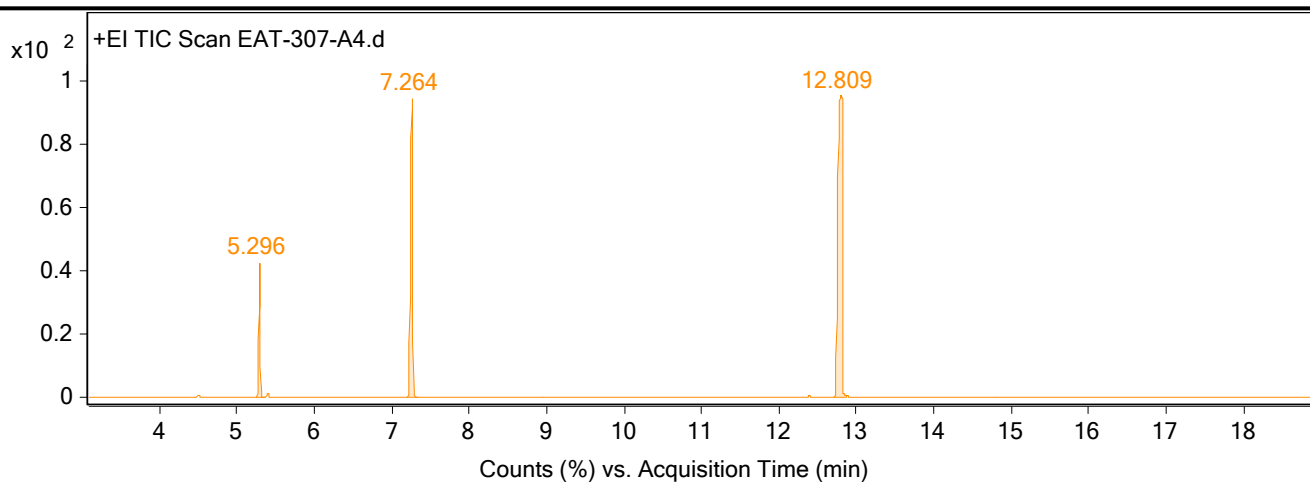
## Chromatograms

Fragmentor Voltage    Collision Energy    0    Ionization Mode    EI



Fragmentor Voltage    Collision Energy    0    Ionization Mode    EI

## Qualitative Analysis Report

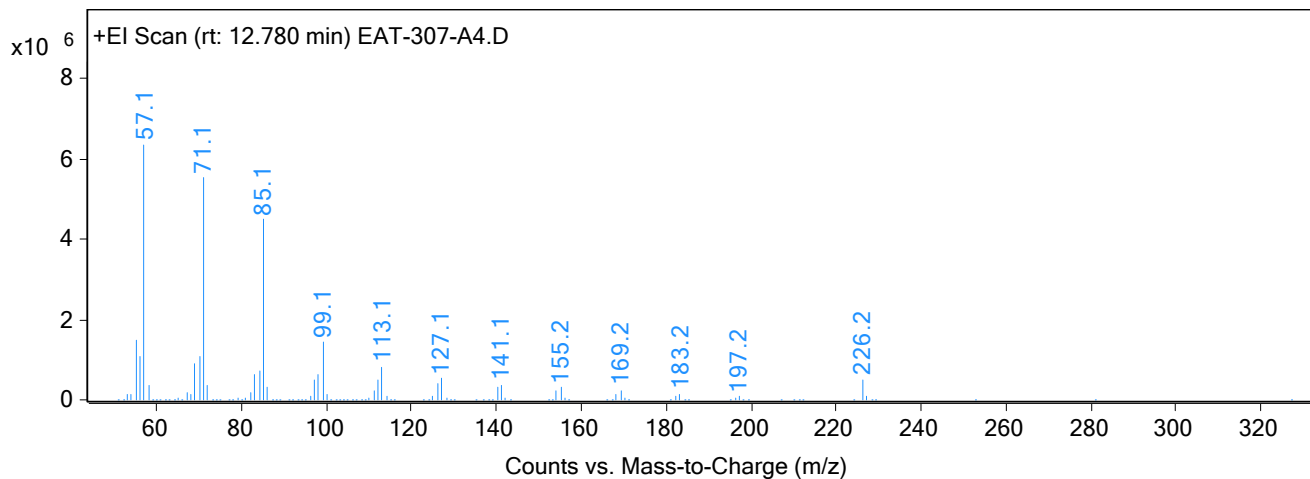


### Integration Peak List

Peak	Start	RT	End	Height	Area	Area %
1	5.244	5.296	5.365	15141504.34	22806449.09	17.21
2	7.196	7.264	7.339	33627871.42	65414522.8	49.36
3	12.706	12.809	12.883	34087147.31	132520607.38	100

## Spectra

Fragmentor Voltage	Collision Energy	Ionization Mode
	0	EI



## Peak List

m/z	z	Abund
55.1		1500333.13
56.1		1095478.38
57.1	1	6370103.5
69.1		891715.06
70.1		1069542.75
71.1	1	5524789
84.1		730530.25
85.1	1	4487377

## Qualitative Analysis Report

---

99.1	1	1421782.88
113.1	1	814885.19

--- End Of Report ---