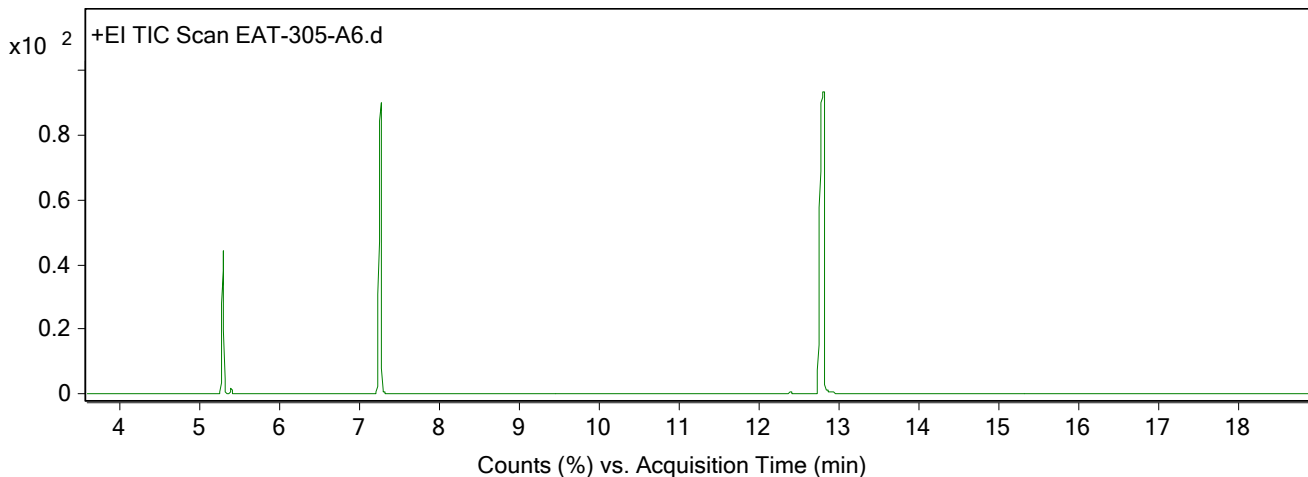


## Qualitative Analysis Report

<b>Data File</b>	EAT-305-A6.D	<b>Sample Name</b>	EAT-305-A6
<b>Sample Type</b>		<b>Position</b>	11
<b>Instrument Name</b>	ThatWay	<b>User Name</b>	EAT
<b>Acq Method</b>	Standard.M	<b>Acquired Time</b>	10/1/2025 5:19:11 PM (UTC+01:00)
<b>IRM Calibration Status</b>	Not Applicable	<b>DA Method</b>	Default.m
<b>Comment</b>			
<b>Expected Barcode</b>			
<b>Dual Inj Vol</b>	1	<b>Sample Amount</b>	
<b>TunePath</b>	D:\MassHunter\GCMS\1\5977\	<b>TuneName</b>	ATUNE.U
<b>MSFirmwareVersion</b>	6.00.34	<b>TuneDateStamp</b>	2025-09-19T09:03:50+01:00
<b>RunCompletedFlag</b>	True	<b>OperatorName</b>	EAT
<b>Acquisition SW Version</b>	MassHunter GC/MS Acquisition B.07.06.2704 18-Jul-2017 Copyright © 1989-2017 Agilent Technologies, Inc.	<b>Acquisition Time (Local)</b>	10/1/2025 5:19:11 PM (UTC+01:00)
<b>SingleQuadrupole Firmware Version</b>	6.00.34	<b>SingleQuadrupole Driver Version</b>	7.6.0.0

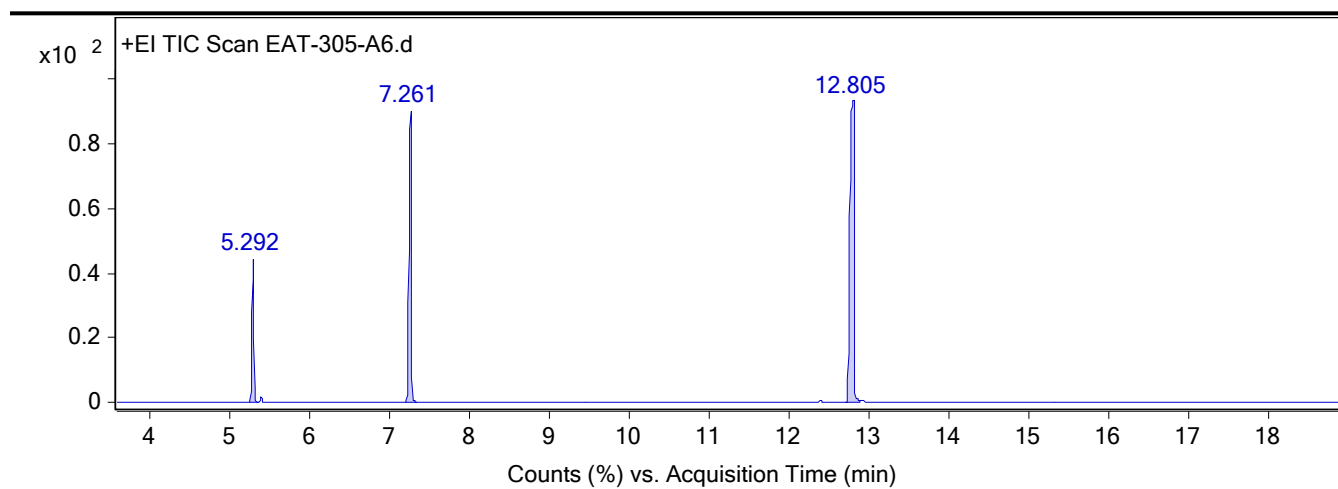
## Chromatograms

**Fragmentor Voltage**    **Collision Energy**    0    **Ionization Mode**    EI



**Fragmentor Voltage**    **Collision Energy**    0    **Ionization Mode**    EI

## Qualitative Analysis Report



### Integration Peak List

Peak	Start	RT	End	Height	Area	Area %
1	5.244	5.292	5.367	15196282.93	24660624.56	19.65
2	7.192	7.261	7.335	30949139.84	65300161.34	52.03
3	12.708	12.805	12.88	32072115.72	125507285.79	100

--- End Of Report ---