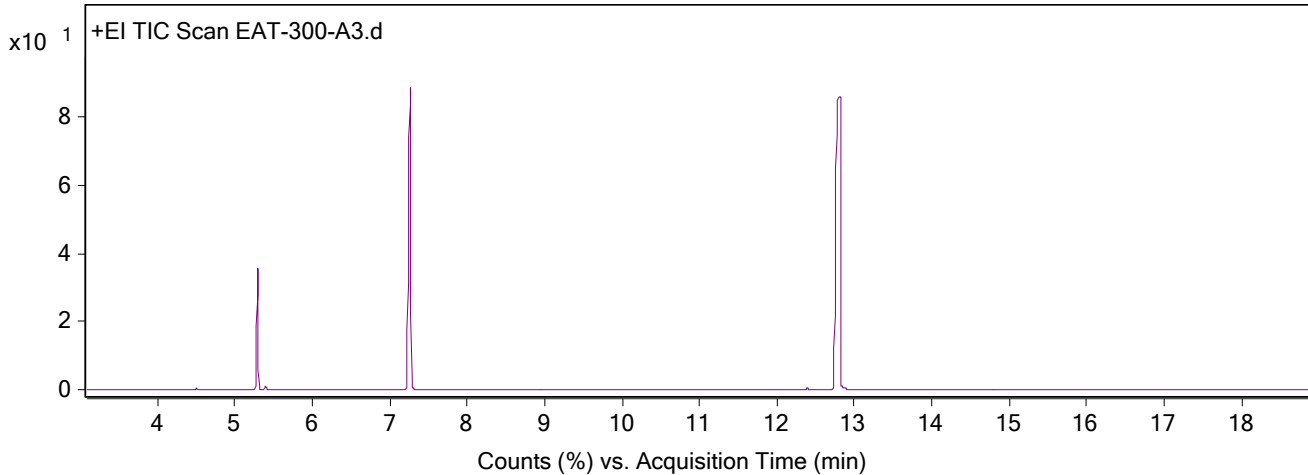


Qualitative Analysis Report

Data File	EAT-300-A3.D	Sample Name	EAT-300-A3
Sample Type		Position	3
Instrument Name	ThatWay	User Name	EAT
Acq Method	Standard.M	Acquired Time	7/11/2025 12:07:44 PM (UTC+01:00)
IRM Calibration Status	Not Applicable	DA Method	Default.m
Comment			
Expected Barcode			
Dual Inj Vol	1	Sample Amount	
TunePath	D:\MassHunter\GCMS\1\5977\	TuneName	ATUNE.U
MSFirmwareVersion	6.00.34	TuneDateStamp	2025-05-14T11:46:32+01:00
RunCompletedFlag	True	OperatorName	EAT
Acquisition SW Version	MassHunter GC/MS Acquisition B.07.06.2704 18-Jul-2017 Copyright © 1989-2017 Agilent Technologies, Inc.	Acquisition Time (Local)	7/11/2025 12:07:44 PM (UTC+01:00)
SingleQuadrupole Firmware Version	6.00.34	SingleQuadrupole Driver Version	7.6.0.0

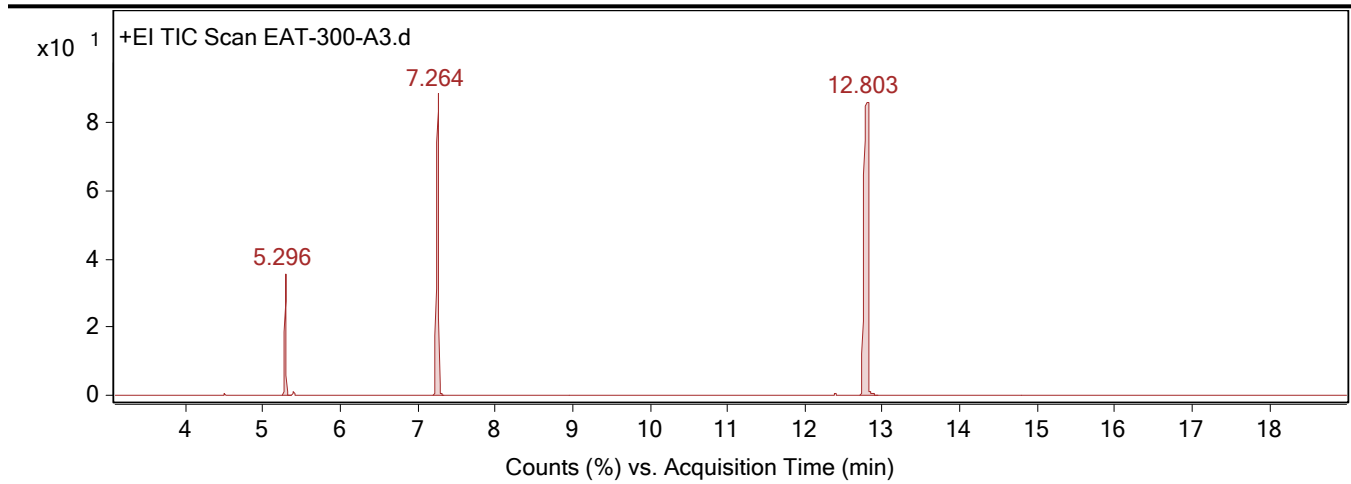
Chromatograms

Fragmentor Voltage Collision Energy 0 Ionization Mode EI



Fragmentor Voltage Collision Energy 0 Ionization Mode EI

Qualitative Analysis Report



Integration Peak List

Peak	Start	RT	End	Height	Area	Area %
1	5.241	5.296	5.364	14187146.37	22087920.32	15.6
2	7.19	7.264	7.338	35313602.53	70431575.08	49.74
3	12.706	12.803	12.946	34302776.23	141587860.96	100

--- End Of Report ---