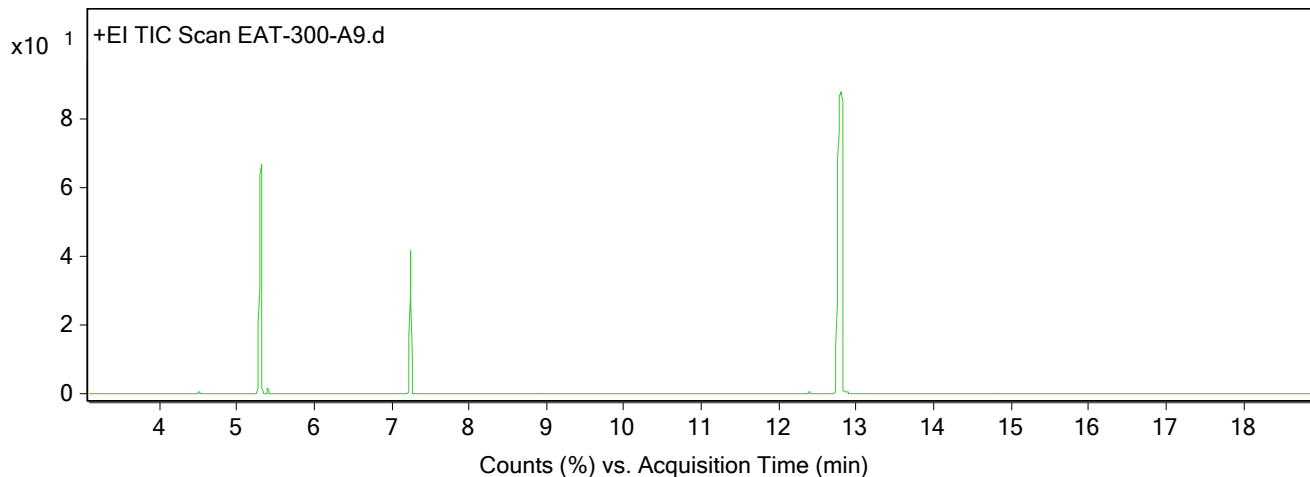


Qualitative Analysis Report

Data File	EAT-300-A9.D	Sample Name	EAT-300-A9
Sample Type		Position	9
Instrument Name	ThatWay	User Name	EAT
Acq Method	Standard.M	Acquired Time	7/11/2025 2:23:57 PM (UTC+01:00)
IRM Calibration Status	Not Applicable	DA Method	Default.m
Comment			
Expected Barcode			
Dual Inj Vol	1	Sample Amount	
TunePath	D:\MassHunter\GCMS\1\5977\	TuneName	ATUNE.U
MSFirmwareVersion	6.00.34	TuneDateStamp	2025-05-14T11:46:32+01:00
RunCompletedFlag	True	OperatorName	EAT
Acquisition SW Version	MassHunter GC/MS Acquisition B.07.06.2704 18-Jul-2017 Copyright © 1989-2017 Agilent Technologies, Inc.	Acquisition Time (Local)	7/11/2025 2:23:57 PM (UTC+01:00)
SingleQuadrupole Firmware Version	6.00.34	SingleQuadrupole Driver Version	7.6.0.0

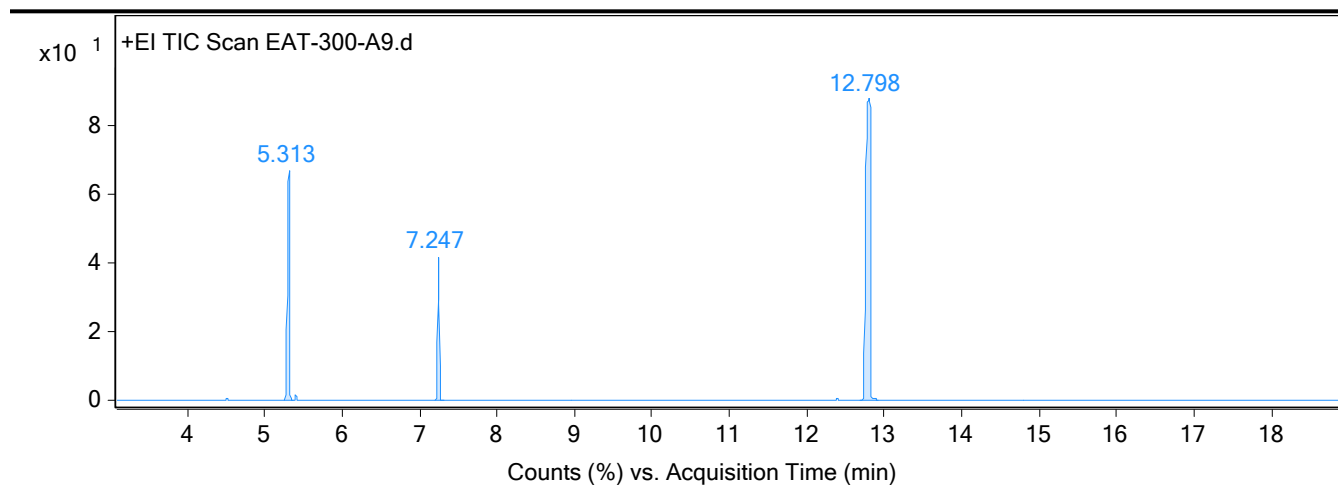
Chromatograms

Fragmentor Voltage **Collision Energy** 0 **Ionization Mode** EI



Fragmentor Voltage **Collision Energy** 0 **Ionization Mode** EI

Qualitative Analysis Report



Integration Peak List

Peak	Start	RT	End	Height	Area	Area %
1	5.242	5.313	5.376	26429271.24	55837766.62	40.79
2	7.196	7.247	7.322	16401682.52	24513992.11	17.91
3	12.683	12.798	12.929	34920282.37	136892010.44	100

--- End Of Report ---