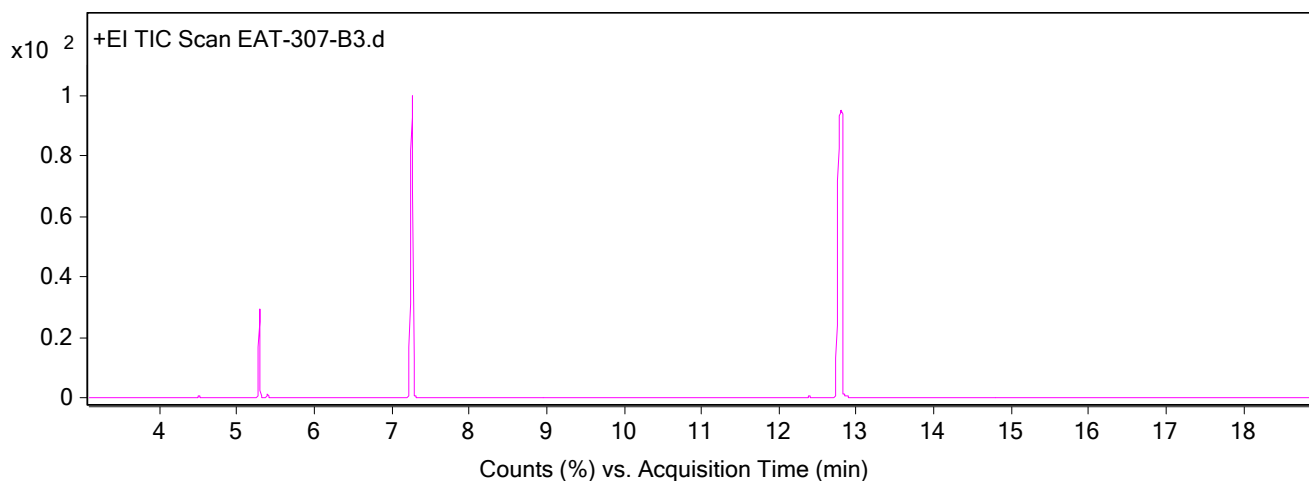


Qualitative Analysis Report

Data File	EAT-307-B3.D	Sample Name	EAT-307-B3
Sample Type		Position	6
Instrument Name	ThatWay	User Name	EAT
Acq Method	Standard.M	Acquired Time	7/26/2025 4:36:29 PM (UTC+01:00)
IRM Calibration Status	Not Applicable	DA Method	Default.m
Comment			
Expected Barcode			
Dual Inj Vol	1	Sample Amount	
TunePath	D:\MassHunter\GCMS\1\5977\	TuneName	ATUNE.U
MSFirmwareVersion	6.00.34	TuneDateStamp	2025-05-14T11:46:32+01:00
RunCompletedFlag	True	OperatorName	EAT
Acquisition SW Version	MassHunter GC/MS Acquisition B.07.06.2704 18-Jul-2017 Copyright © 1989-2017 Agilent Technologies, Inc.	Acquisition Time (Local)	7/26/2025 4:36:29 PM (UTC+01:00)
SingleQuadrupole Firmware Version	6.00.34	SingleQuadrupole Driver Version	7.6.0.0

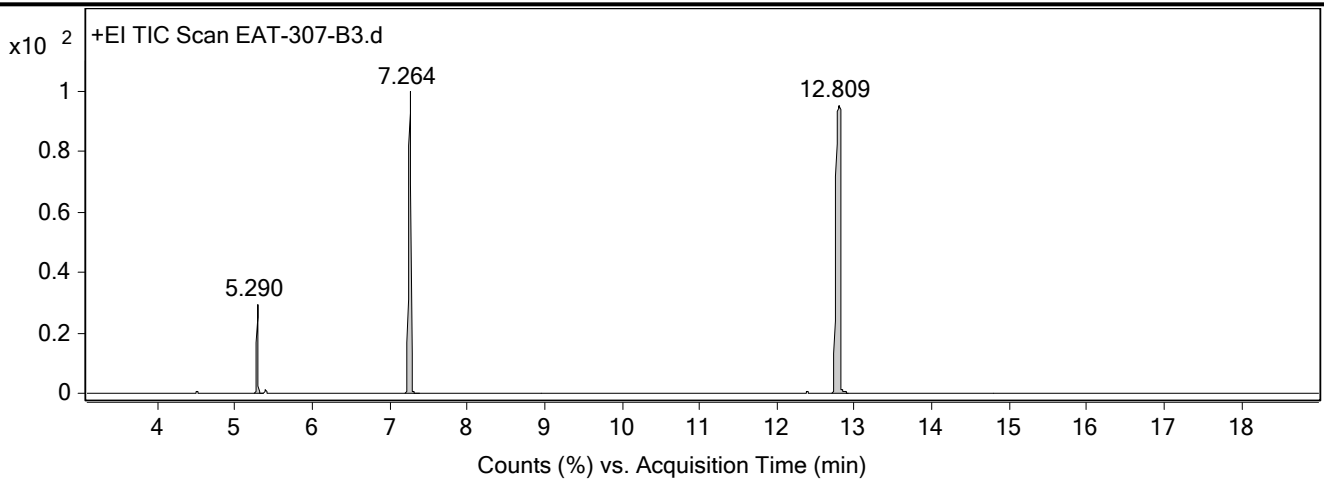
Chromatograms

Fragmentor Voltage **Collision Energy** 0 **Ionization Mode** EI



Fragmentor Voltage **Collision Energy** 0 **Ionization Mode** EI

Qualitative Analysis Report

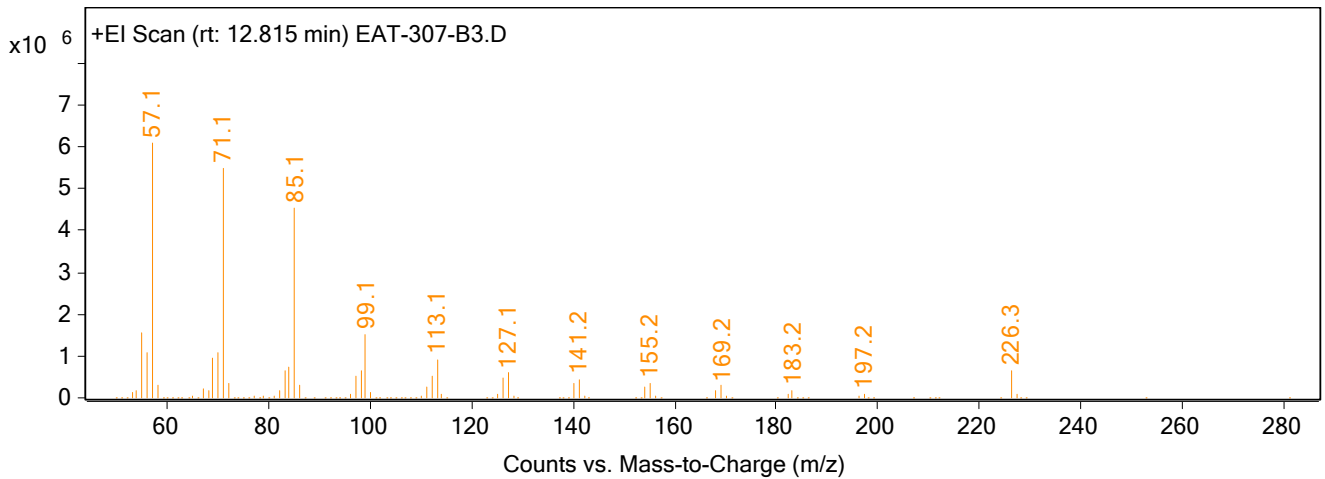


Integration Peak List

Peak	Start	RT	End	Height	Area	Area %
1	5.245	5.29	5.365	10400705.04	14510398.75	10.68
2	7.196	7.264	7.373	35751664.35	78092971.63	57.5
3	12.706	12.809	12.918	33956067.88	135821980.93	100

Spectra

Fragmentor Voltage	Collision Energy	Ionization Mode
	0	EI



Peak List

m/z	z	Abund
55.1		1545579.38
56.1		1078426.5
57.1	1	6112834
69.1		932073.5
70.1		1073005.38
71.1	1	5495090
84.1		748333.63
85.1	1	4556341.5

Qualitative Analysis Report

99.1	1	1518499.25
113.1	1	912695.25

--- End Of Report ---