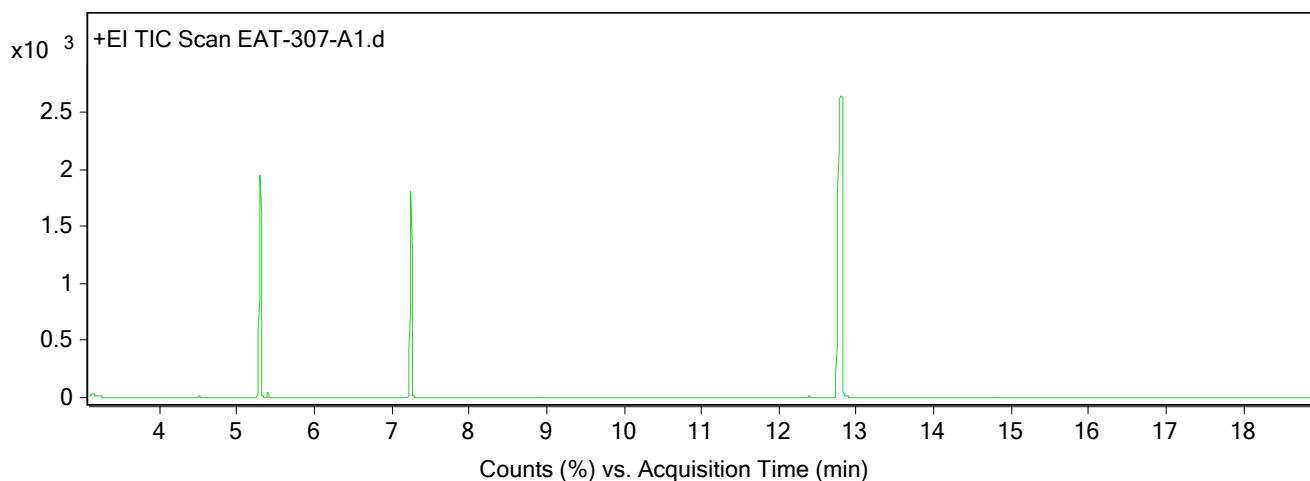


Qualitative Analysis Report

Data File	EAT-307-A1.D	Sample Name	EAT-307-A1
Sample Type		Position	1
Instrument Name	ThatWay	User Name	EAT
Acq Method	Standard.M	Acquired Time	7/26/2025 2:42:37 PM (UTC+01:00)
IRM Calibration Status	Not Applicable	DA Method	Default.m
Comment			
Expected Barcode			
Dual Inj Vol	1	Sample Amount	
TunePath	D:\MassHunter\GCMS\1\5977\	TuneName	ATUNE.U
MSFirmwareVersion	6.00.34	TuneDateStamp	2025-05-14T11:46:32+01:00
RunCompletedFlag	True	OperatorName	EAT
Acquisition SW Version	MassHunter GC/MS Acquisition B.07.06.2704 18-Jul-2017 Copyright © 1989-2017 Agilent Technologies, Inc.	Acquisition Time (Local)	7/26/2025 2:42:37 PM (UTC+01:00)
SingleQuadrupole Firmware Version	6.00.34	SingleQuadrupole Driver Version	7.6.0.0

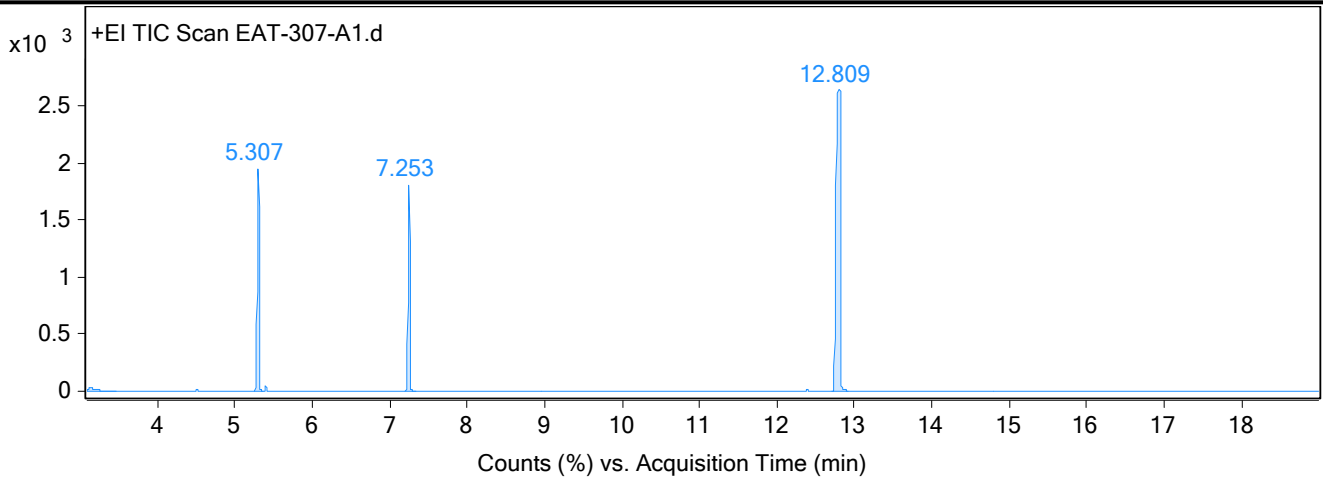
Chromatograms

Fragmentor Voltage Collision Energy 0 Ionization Mode EI



Fragmentor Voltage Collision Energy 0 Ionization Mode EI

Qualitative Analysis Report

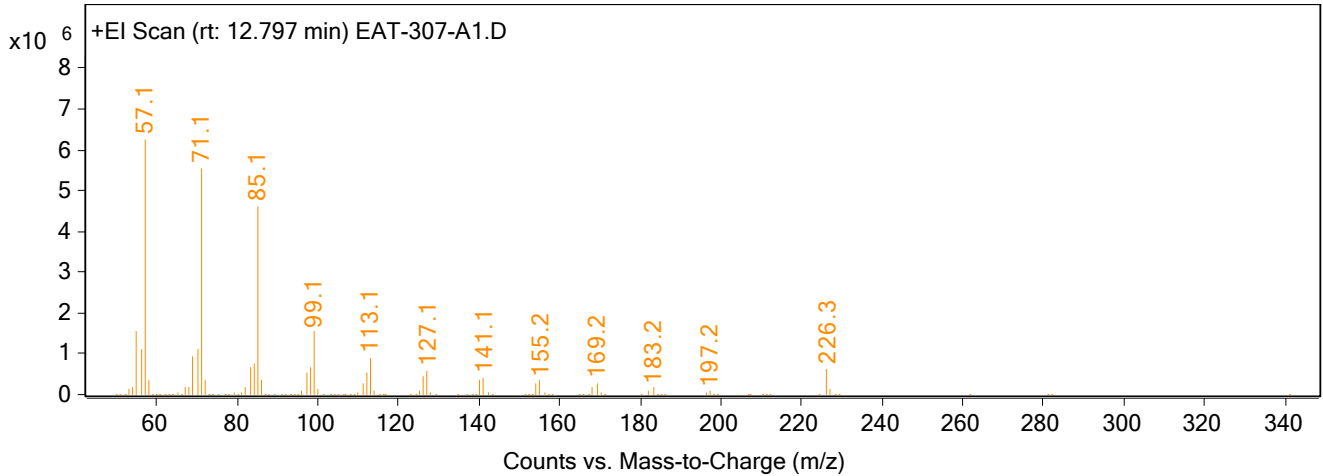


Integration Peak List

Peak	Start	RT	End	Height	Area	Area %
1	3.093	3.139	3.465	328774.68	2498758.51	1.83
2	5.239	5.307	5.376	24972562.91	47029387.12	34.44
3	7.196	7.253	7.327	23239053.7	35575780.55	26.05
4	12.712	12.809	12.918	34026026.34	136570599.96	100

Spectra

Fragmentor Voltage Collision Energy Ionization Mode
0 EI



Peak List

m/z	z	Abund
55.1		1564933.63
56.1		1102869.38
57.1	1	6268453.5
69.1		928696.25
70.1		1087791.13
71.1	1	5542574
84.1		760815.69

Qualitative Analysis Report

85.1	1	4614833
99.1	1	1536017.38
113.1	1	898804.38

--- End Of Report ---