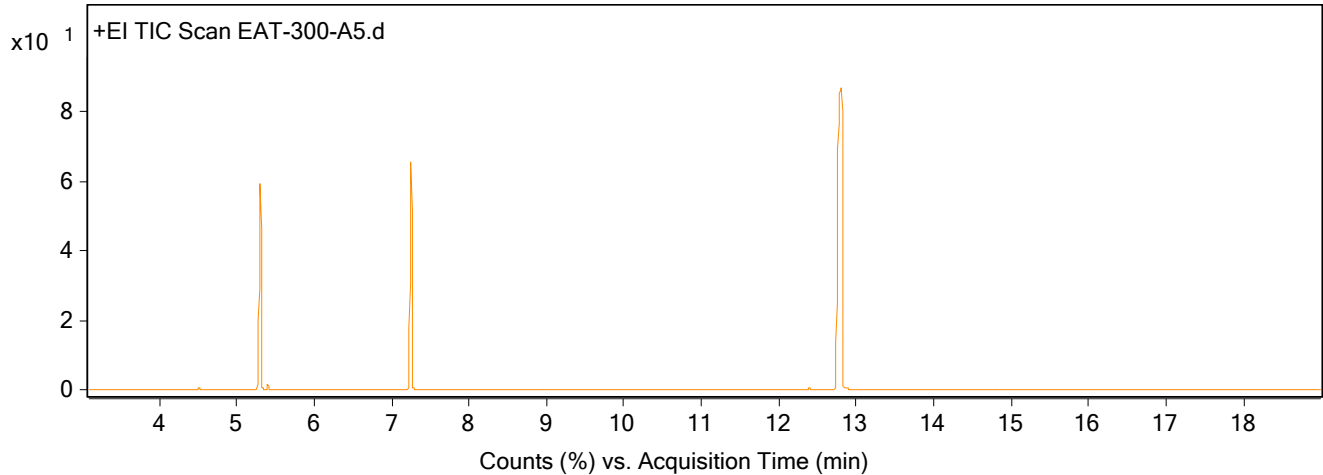


Qualitative Analysis Report

Data File	EAT-300-A5.D	Sample Name	EAT-300-A5
Sample Type		Position	5
Instrument Name	ThatWay	User Name	EAT
Acq Method	Standard.M	Acquired Time	7/11/2025 12:53:18 PM (UTC+01:00)
IRM Calibration Status	Not Applicable	DA Method	Default.m
Comment			
Expected Barcode			
Dual Inj Vol	1	Sample Amount	
TunePath	D:\MassHunter\GCMS\1\5977\	TuneName	ATUNE.U
MSFirmwareVersion	6.00.34	TuneDateStamp	2025-05-14T11:46:32+01:00
RunCompletedFlag	True	OperatorName	EAT
Acquisition SW Version	MassHunter GC/MS Acquisition B.07.06.2704 18-Jul-2017 Copyright © 1989-2017 Agilent Technologies, Inc.	Acquisition Time (Local)	7/11/2025 12:53:18 PM (UTC+01:00)
SingleQuadrupole Firmware Version	6.00.34	SingleQuadrupole Driver Version	7.6.0.0

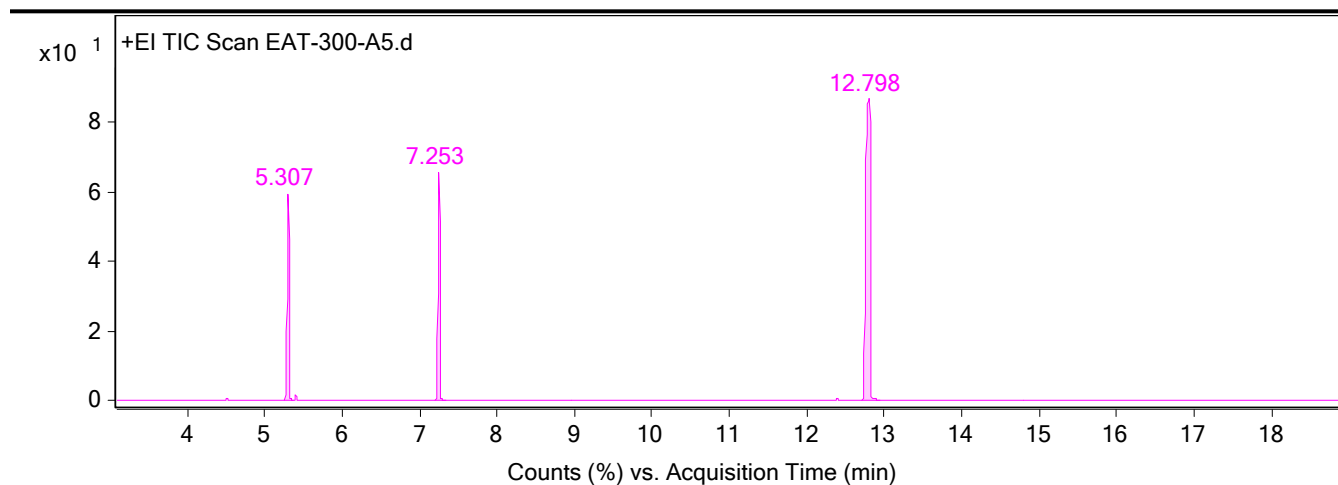
Chromatograms

Fragmentor Voltage **Collision Energy** 0 **Ionization Mode** EI



Fragmentor Voltage **Collision Energy** 0 **Ionization Mode** EI

Qualitative Analysis Report



Integration Peak List

Peak	Start	RT	End	Height	Area	Area %
1	5.245	5.307	5.37	23520235.65	45246193.37	33.72
2	7.196	7.253	7.327	26028346.22	41799873.58	31.15
3	12.706	12.798	12.941	34632818.09	134171368.46	100

--- End Of Report ---