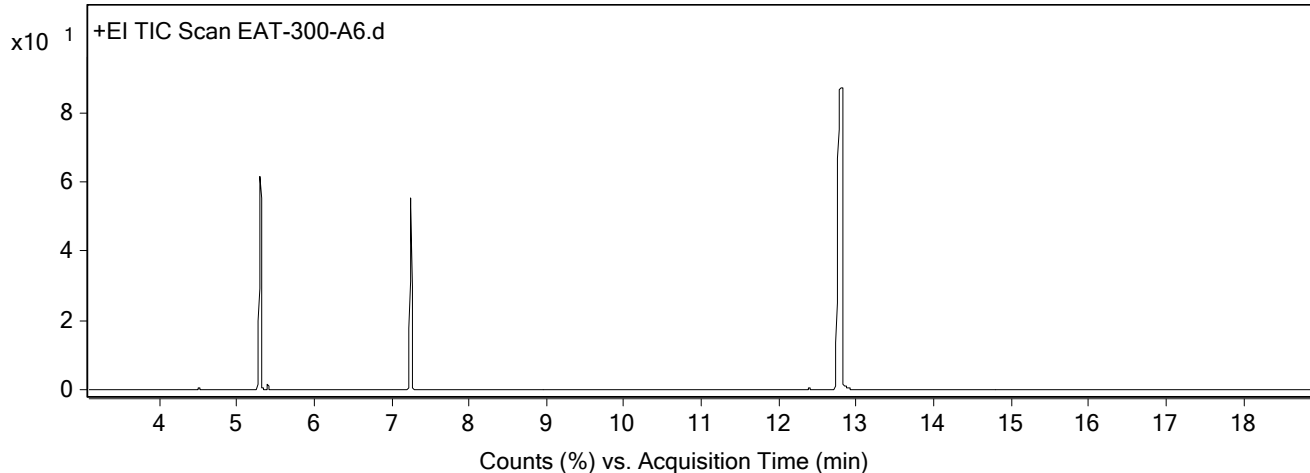


## Qualitative Analysis Report

<b>Data File</b>	EAT-300-A6.D	<b>Sample Name</b>	EAT-300-A6
<b>Sample Type</b>		<b>Position</b>	6
<b>Instrument Name</b>	ThatWay	<b>User Name</b>	EAT
<b>Acq Method</b>	Standard.M	<b>Acquired Time</b>	7/11/2025 1:15:59 PM (UTC+01:00)
<b>IRM Calibration Status</b>	Not Applicable	<b>DA Method</b>	Default.m
<b>Comment</b>			
<b>Expected Barcode</b>			
<b>Dual Inj Vol</b>	1	<b>Sample Amount</b>	
<b>TunePath</b>	D:\MassHunter\GCMS\1\5977\	<b>TuneName</b>	ATUNE.U
<b>MSFirmwareVersion</b>	6.00.34	<b>TuneDateStamp</b>	2025-05-14T11:46:32+01:00
<b>RunCompletedFlag</b>	True	<b>OperatorName</b>	EAT
<b>Acquisition SW Version</b>	MassHunter GC/MS Acquisition B.07.06.2704 18-Jul-2017 Copyright © 1989-2017 Agilent Technologies, Inc.	<b>Acquisition Time (Local)</b>	7/11/2025 1:15:59 PM (UTC+01:00)
<b>SingleQuadrupole Firmware Version</b>	6.00.34	<b>SingleQuadrupole Driver Version</b>	7.6.0.0

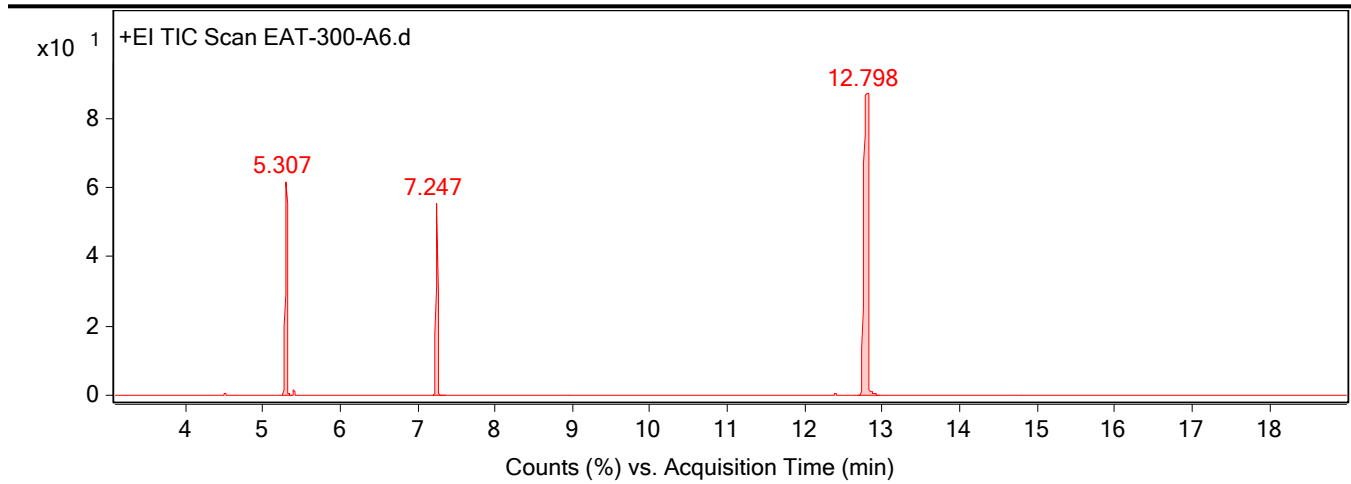
## Chromatograms

**Fragmentor Voltage**    **Collision Energy**    0    **Ionization Mode**    EI



**Fragmentor Voltage**    **Collision Energy**    0    **Ionization Mode**    EI

## Qualitative Analysis Report



### Integration Peak List

Peak	Start	RT	End	Height	Area	Area %
1	5.239	5.307	5.37	24544971.17	48573439.16	32.9
2	7.197	7.247	7.356	22003283.28	34823091.37	23.59
3	12.683	12.798	12.975	34741066.58	147620329.83	100

--- End Of Report ---