

THE SPATIAL PATTERNS OF STUDENT MOBILITY BEFORE, DURING AND AFTER THE BOLOGNA PROCESS IN GERMANY

PHILIPP GAREIS^{*,**}  & TOM BROEKEL^{***} 

^{*}Department of Spatial Planning and Urban Geography, Faculty of Geography, Justus-Liebig-University Giessen, Giessen, Germany. Email: philipp.gareis@bbr.bund.de

^{**}Federal Institute for Research on Building, Urban Affairs and Spatial Development (BBSR), Bonn, Germany. Email: philipp.gareis@bbr.bund.de

^{***}University of Stavanger (UiS), Business School, Stavanger, Norway. E-mail: philipp.gareis@bbr.bund.de (Corresponding author)

Received: March 2021; accepted December 2021

ABSTRACT

The paper contributes to the literature investigating students' spatial mobility. By focusing on German higher education students with a novel dataset providing data from 1999 to 2015, we evaluate the impact of the change from a one-tiered to the two-tiered study structure of bachelor and master degrees (Bologna reform) on their inter-regional mobility and its underlying drivers. Our analysis confirms the system change to slightly alter inter-regional mobility of students. However, differences distinguish between different fields of study and universities and universities of applied sciences and indicate that the German higher education system is fairly resilient in its allocation of students. A Bologna-Drain of students moving from rural to urban regions to study master programs, can partially be confirmed for students of business studies. Our results reject the idea of (low) tuition fees discouraging students from enrolling in specific locations.

Key words: Bologna; student mobility; higher education; policy impact

INTRODUCTION

University regions are the main beneficiaries of human capital inflows, as in-migration to university regions usually exceeds out-migration (Winters 2011). Higher education institutions (HEI) upgrade the skill portfolio of their labour market regions by attracting students at different stages of their education which increases the human capital stock and results in spillover effects (Abel & Deitz 2012). In this sense, the educational period of students represents a window of opportunity for regions to attract and secure (future) human capital (Oggenfuss & Wolter 2019). Despite the importance of a necessary heterogeneity of human capital to foster regional development

(Florida *et al.* 2008; Unger *et al.* 2011), well-established and renowned HEI are known to be key components of successful regions. Yet, the effects of less prominent HEI should not be underestimated in this context (Andrews 2020).

The basis for this mechanism is students' geographical mobility. For a long time, in many countries, students were more or less faced with a one-shot decision about where to study, which in many cases also determined where they would look for their first job and potentially shape this regions' skill portfolio (Moschner 2010). In the early 2000s, the Bologna process (BP) had the potential of a massive disruption to these patterns by introducing (or at least substantially easing) the

possibility to re-consider this choice with the establishment of the Bachelor and Master structures replacing the traditional one-tiered five-year programmes. The additional choice after the completion of the Bachelor gives students the opportunity to re-evaluate their current location (Heine 2012). As an empirical example, we study Germany and the Bologna-process-induced change from a one-tiered study structure (OTSS) with Diploma, Magister and State Exam degrees to a two-tiered study structure (TTSS) with Bachelor and Master degrees in the 2000s. With the exception of some early case studies (Ausprung & Hinz 2011; Heine 2012) and survey-based approaches (Lörz *et al.* 2015; Neugebauer *et al.* 2016; Kretschmann *et al.* 2017; Kaiser & Rudel 2018), this aspect of the Bologna-process has received little scientific attention so far, especially from a macro-perspective (Mollica & Petrella 2017). Therefore, we present the first investigation from a macro-perspective for a transforming higher education system (HES) which incrementally introduced the TTSS.

Employing gravity panel regression techniques, we explore shifts in the spatial patterns of student mobility by utilizing information on the complete inter-regional student flows for three fields of study (business Studies, engineering, and natural science) in Germany, for the time before (1999–2002), during (2003–2008) and after (2009–2015) the peak of the Bologna-process. We differentiate between types of degrees (Diploma, Bachelor, Master) and types of HEI (universities and universities of applied sciences (UAS)).

Our results suggest that student mobility patterns proved to be relatively resilient with respect to the Bologna process with their basic structures and mechanisms remaining in place. However, we identified some notable shifts. For instance, with the exception of natural sciences students at UAS, we find an increased mobility of Master students in comparison to Bachelor and traditional Diploma students. We also confirm changes in the relative importance of several locational factors. In the case of business studies students, the Bologna-process and the (now) easier mobility of these students supported a further enriching of urban labour markets with students from Master programmes. Interestingly, the same cannot be

said for students in engineering and natural sciences, which is likely related to attractive studying and working conditions for related professions in less urbanized regions.

The paper is structured in the following way: In Section 2, the theoretical background and related literature are presented. The transformation of the HES in Germany is explained in Section 3. Thereafter, Section 4 contains the empirical approach of our study. Finally, our findings are presented (Section 5) and discussed (Section 6), and policy recommendations are given in Section 7.

THEORETICAL BACKGROUND AND RELATED LITERATURE

Within-country student mobility is often explained by rational choice theory, models of status-attainment, and life course theory, which translate into two main streams in the empirical literature (Dotti *et al.* 2013). First, there are studies that are based on the status attainment models like the Wisconsin model of Educational and Occupational Attainment or the Blau-Duncan's model, which focus on determinants such as the parents' education, individual educational attainment, socio-economic status, mental ability, and other influences from peers and family (Haller & Portes 1973). Consequently, many of these studies concentrate on socio-economic and parental background as well as individual motivations on the base of (semi-) structured interviews and surveys.

In the second literature stream the main theoretical base is Rational Choice Theory (RCT), according to which students tend to maximize their individual utility when choosing where to study. The individual utility is lowered by more than monetary costs, also social and psychological costs matter in this context, all of which are held to counteract distance in a migration decision (Sjaastad 1962). Given that students' utility is improved by better quality of living and studying, studies within this stream are particularly interested in evaluating the importance of the quality of universities (Bratti & Verzillo 2019) and locational factors in students' locational choices. Within this stream, frequently a life cycle perspective is taken, that

is, students' decisions are contextualized by the biographical point of time of their choice (Elder *et al.* 2003, p. 12). Over the course of their life, certain aspects gain in importance while others decrease. For instance, while at the beginning of their study programmes, students tend to be more focused on the content of their programmes and the attractiveness of the university's location, at a later stage and especially for graduates, aspects related to the situation in the labour market and career prospects become more important and young people tend to move to 'escalator regions' (Fielding 1992).

While there are many reasons for students not to leave their home region, it is argued frequently that most of them correlate with geographical distance. It is therefore (still) the most critical, and deterring, factor for student migration, even when controlling for various dimensions of socio-economic status and when considering a wide range of (dis-)advantages of the origin and destination region (Alm & Winters 2009; Gibbons & Vignoles 2012; Dotti *et al.* 2013). Researchers model this by means of the origin-destination-framework (Wielgoszewska 2018). For instance, low unemployment rates in the HEI destination location have been identified as a pull factor and high unemployment rates in the location of origin act as a push factor (Cooke & Boyle 2011; Dotti *et al.* 2013; Lourenço & Sá 2019). The overall state of the local economy can also be a push or a pull factor for students depending on the economic situation on-site (Tosi *et al.* 2019). Interestingly, while they seem rather straightforward, these empirical results are not unambiguous across HES and countries (Psycharis *et al.* 2019).

The mobility-reducing effect of distance still holds when HEI-specific factors like quality and programme scope are taken into consideration (Sá *et al.* 2004; Bratti & Verzillo 2019). In the empirical literature aspects such as socio-economic status and pre-college experiences often overshadow the role of geography (Hillman 2016, p. 1011). However, there are many reasons why distance still matters. Emotional costs rise with distance because changing locations involves giving up social ties and increasing transaction costs (Denzler & Wolter 2010; Winters 2011; Dotti *et al.* 2013,

2014). There is also strong evidence of potential students living further away from a HEI being less likely to participate in a higher education programme, despite there are some programmes like education, medicine or arts that are able to attract students living far away from a HEI (Frenette 2004, 2006; Sá *et al.* 2004; Denzler & Wolter 2010; Suhohen 2014). Distance is a cost factor and, therefore, an equity problem. Therefore, its impact on students' decisions is strongly shaped by the socio-economic background and seems to cause a selection process at the Master level in Germany (Krawietz 2008; Lörz *et al.* 2015). Furthermore, in some countries, tuition and the costs of visiting a HEI may be significant in the choice process (Sá *et al.* 2004; Alm & Winters 2009; Dwenger *et al.* 2012; Wakeling & Jefferies 2013; Dotti *et al.* 2013). While tuition fees in Germany are generally relatively low, they may still impact students' locational choice and in particular for those from lower-income families (Spiess & Wrohlich 2010; Lörz *et al.* 2015; Neugebauer *et al.* 2016; Kretschmann *et al.* 2017).

Notably, in the last years, the role of HEIs has changed (Perna 2006). Today, the HEIs cater to their costumers (students) and actively engage in marketing as well as branding (Vrontis *et al.* 2007; Han 2014). Therefore, students get more information on the one hand, which will enhance their decision. At the same time, the decision about where to study also becomes more complex and potentially distorted by selective information or information overload. Consequently, a 'rational' choice is (despite the better access to more information) as unlikely as ever (DesJardins & Toutkoushian 2005, p. 216). Nevertheless, at least the re-evaluation of their study location can be expected to have become more rational because of higher levels of accumulated knowledge about study programmes after having obtained a Bachelor's degree (Holdsworth 2009; de Boer *et al.* 2010).

We expect that the changes in the higher education system lead to different spatial mobility patterns of students. The life-course approach suggests that decisions at an early stage of an academic career, for example, after high school, will be strongly impacted by the social and cultural attractiveness of locations.

Moreover, relations to (high school) friends and family are of higher importance (Perna 2006). In contrast, at a later stage, students tend to be more concerned about the job market and their professional career. Consequently, this will play a bigger role when deciding about where to study their Master.

This is summarized in our two hypotheses:

H1: The choice of study location is stronger shaped by the economic attractiveness of the HEI destination region for students transitioning from Bachelor to Master than when high school students choose where to study for their Bachelor.

H2: The decision of where to study is stronger shaped by HEIs' proximity to students' home regions for students transitioning from high school to Bachelor than for those advancing from Bachelor to Master.

Crucially, the BP may have substantial consequences for regional job markets and general spatial inequality. A greater mobility of students towards already prosperous agglomerations will potentially fuel a brain-drain from regions without or with small HEI (Gareis *et al.* 2018) and add, in form of a more potent labour pool, to the advantages of agglomerations and economically flourishing regions (e.g. Dotti *et al.* 2013). Especially, this could be the case for specific fields of study like business studies where graduates tend to be more mobile and on occasion move to agglomerations (Venhorst *et al.* 2010).

THE TRANSFORMATION OF THE GERMAN HES

Starting in 1999, the BP has massively reformed the HES in Germany. The traditional one-tiered-system with a 4 to 6-year degree structure, comprising the degrees of Diploma, Magister and State Examination, was transformed into TTSS with a 3- to 4-year Bachelor and a 1- to 2-year Master's degree. Today, just 6.5 per cent of all degree programmes have not been transformed to this system. Consequently, the transformation of the HES towards the new system can be considered as completed¹ (HRK 2018).

As pointed out above, the reorganization of the HES implies today's students having a much greater mobility potential than in the

previous system. Their locational decision process that originally included more or less one decision (from upper-secondary school to higher education) has been extended by an additional opportunity to alter their locational choice (transition between Bachelor and Master). This opportunity is taken by 53 per cent of the Bachelor students at UAS, and 77 per cent of the Bachelor students at universities in Germany (Rehn *et al.* 2011). These numbers are high compared to other European countries (de Boer *et al.* 2010). Furthermore, many students also reconsider their locational choice at this stage (Heine 2012; Lörz *et al.* 2015).

The attractiveness to move has grown during the transition phase. In particular, the number of potential study locations has substantially increased in Germany (HRK 2019), which was especially driven by the convergence of universities and UAS. In contrast to pre-BP times, today, the two institutions share the same study system (Bachelor-Master-degrees) and have become very similar in terms of pushing research, as well as attracting students. The UAS have therefore become serious alternatives to the classic universities and consequently have enlarged the opportunity set for students.² Nevertheless, about two-thirds of the HEI students are still enrolled in universities and only one third at UAS (Turner 2019). The still existing difference between the two also shows in the structure of students. Students at UAS tend to be older, they have more frequently a vocational training background, and have less educated parents (Neugebauer *et al.* 2016). This translates into different mobility patterns as well, as students from higher-income families tend to be geographically more mobile (Spiess & Wrohlich 2010). Another crucial development in this context is the ever-increasing student numbers that surged from around 1.8 in 1999 to around 2.9 million students in 2020 (BMBF 2020). Other countries facing similar changes of their HES witness growing numbers of students who would not have pursued an academic career before the BP (Cappellari & Lucifora 2009). For this reason, as the growth exceeds the expansion of HEI's capacities, increasing student numbers could lead to growing competition for study

places and a potential reorganization of mobility patterns.

EMPIRICAL METHOD – A ZERO-INFLATED MODEL APPROACH

From the above, it becomes clear that parents and peers influence the decision of where to study. The local environment further adds a range of constraints, incentives and opportunities. Nevertheless, the decision is ultimately an individual one implying that empirical investigations into this process would naturally also take place at this level. Unfortunately, in Germany it is currently not possible to access individual-level data on study location choices and combine this with HEI or regional level variables that are not aggregates of the individual-level information over such a long period. This is only possible by working at a level of higher aggregation. Given our interest in these factors, consequently, we must accept this restriction and employ macro-level approach following Dotti *et al.* (2013, 2014) that is explained in more detail in the following.

As pointed out above, we aim to explain the intensity of inter-regional student mobility in Germany with regional characteristics of students' home and destination locations. We consider all locations in the country at the level of districts. However, we have to account for the fact that while each student has only one home location within a district, there might be multiple HEI in a district. The latter prevents just looking at district-to-district mobility. We therefore consider all potential home districts in combination with all potential HEI within districts. Put differently, we model to what extent HEIs attract students from all districts in Germany and how this has changed from the time before, to the time during, and to the time after the implementation of the BP.

Our units of observation are pairs of HEIs (destinations) and districts (origins) for which we observe a flow (number of students) intensity. As is common in these types of settings, we apply a modified gravity regression approach with the number of students moving from district A to HEI I at time t as a dependent variable (Dotti *et al.* 2013). Most HEI receive students

from a limited set of locations implying that the distribution of the dependent variable is dominated by zero values and few cases having relatively large numbers (see Figure S1).

To address the excess of zeros, we use a zero-inflated Poisson model (ZIP). We refrain from using a negative binomial regression because the high amounts of zeros are accompanied by many low and few high values (f).³

A zero-inflated model consists of two parts: the binary part, which models the existence of zero counts (no student mobility), and the count part, which represents the intensity of mobility conditional on the existence of a positive count in the first place (positive numbers of students moving). The model provides a distinct set of coefficients for each of these parts. However, we restrict the presentation and discussion to the count part of the zero-inflated regression models, which we see as being more meaningful than the zero-part. The latter models the existence of a positive flow between locations, which might be minor in many instances (see Figure S1). The results of these models are in the attachment.

To account for potential differences between fields of study, types of HEI, and periods, separate models are run for each of these situations.

DATA

Our data are collected from several sources. The basis is microdata of the Research Data Centres of the Statistical Offices of the Federal States. Every student and his or her characteristics such as age, origin, previous field of study are recorded for the years from 1995 to 2015 in a cross-sectional database with no linkage to the educational biography of the students (RDC 2019). The data files are available for every summer and every winter term. However, just winter term files register all students. The data covers 814 HEIs and differentiates between 402 districts of origin (German NUTS-3 regions after recoding local government reforms (DESTA 2019)). Due to changes in the delineation of districts in the 1990s in Germany, many regional statistics are difficult to compare over time. However, since 1999, the delineation is relatively stable or allows for

aggregating consistently. We, therefore, restrict our time of observation to 1999 and the most recent years for which data is available (2015).

We geolocated all 814 HEI locations using Google Maps (Google 2018) and created 327.228 pairs of HEI – district with their according numbers of students moving from their origin (district of university entrance Diploma) to their destinations (HEI location). Due to confidentiality, counts have to be aggregated to a minimum of 3 students per combination. Consequently, personal information, like gender, age and previous study programmes or academic degrees remain unavailable. However, we obtained the exact numbers of students per year for each HEI-district pair. Similar to Winters (2011), we concentrate on domestic migration in Germany and neglect all international mobility, as that may have very different mobility patterns and motives.

In contrast to most of the literature but in line with Ciriaci (2014) and Dotti *et al.* (2013), we differentiate between fields of studies as these are known to show distinct geographical mobility patterns. More precisely, we consider three distinct fields of study: engineering, natural sciences, and business studies. Students of business studies are known to be the most mobile group, with more than half of them having changed their HEI in Germany during their period under study (Heine 2012). In contrast to this finding, natural science and engineering students are known to be the least mobile group in Germany (Heine 2012; Haussen & Uebelmesser 2018). Hence, we collected the numbers for these three different fields of study.

To isolate the effect of the HES transition, all models are estimated for three periods (prior 2002, 2003–2008, and the years after 2009) with the first period representing the time in which the traditional system dominated (primarily Diploma-based study programmes). The second period encompasses the time in which most study programmes were re-organized to the Bachelor-Master system. The third period shows the period after most of the transitions were completed, and mostly Bachelor and Master programmes were offered.

Through running separate models, we consider differences between universities and UAS as well as the three types of degrees (Diploma,

Bachelor and Master) by larger differences in effect sizes and change of +/- signs controlled for significance by the test established by Paternoster *et al.* (1998). Each combination of fields of study, period, type of HEI, and types of degrees represents an individual scenario for which a regression model is estimated. As we also include some models for situations with and without tuition fees, we estimate 54 ZIP-models in total (Tables 2–4 and S1–S3). Summary statistics for the different years of observations are available upon request.

The information on student flows was combined with secondary regional data obtained from the INKAR database (INKAR 2018). If not relational in nature, that is, the variable characterizing the relationship between the district of origin and destination HEI, all variables are created in two versions. The first approximates the conditions in the students' district of origin (Orig:) and the second that in the district of the HEI (Dest:). Consequently, we assigned all HEI to their corresponding districts.

The first is (air-line) distance from the district of origin to the HEI. It is one of the focal variables in the models ($\log(\text{distance})$), which relates to hypothesis 2. We thereby improve upon many existing studies that do not rely on exact distances (Spiess & Wrohlich 2010; Lourenço & Sá 2019). Alternative measures found in the literature are distances to other metropolises (Winters 2011) or rail-network-distances (Gibbons & Vignoles 2012). However, in line with Lourenço and Sá (2019), we expect strong correlations between the different measurements and, therefore, choose air-line distance for our models.

We also consider if students' district of origin and their HEI are located within the same federal state (Within state) to capture potential institutional boundaries as well as considering an alternative measure of geographic distance and cultural similarities (Alm & Winters 2009; Buenstorf *et al.* 2016). We also differentiate if a relation implies moving from (or to) locations in the former German Democratic Republic (GDR) (West-East & East-West). Moreover, a differentiation is done between mobility to and from agglomerations (Orig/Dest: agglomeration) and rural areas (Orig/Dest: rural) (Venhorst *et al.* 2010). We use the definition

of agglomerations by the BBSR (2009), which relies on population density and inhabitants and is widely used in studies about Germany (Buenstorf *et al.* 2016). Accordingly, agglomerations are defined as regional metropolises with more than 300,000 inhabitants or a population density of 300 inhabitants per square kilometre, and rural regions have more than 100,000 inhabitants or 100 inhabitants per square kilometre (BBSR 2009). Lastly, there are urbanized regions that do not qualify as any of these two and are not included. These dummy variables are complemented by the total population (Orig/Dest: pop) and the population density of the region of origin and destination (Orig/Dest: pop density). Student migration is often affected by these variables, and we, therefore, control for both (e.g. Faggian *et al.* 2007). To further capture mobility between rural and urban origin, we also add the relational variable difference in population density (Diff pop density).

University rankings for Germany are not used in our analysis because they are not consistent between HEI and fields of study (Zeit Campus 2020), and they do not play a major role in the decision process of students in Germany (Weisser 2020). A better indicator is to account for more saturated student programmes and HEI that are potentially more attractive (e.g. Ciriaci 2014). Therefore, we consider the number of students in the same field of study at the HEI (Orig/Dest: studs field of study) and the total numbers of students at the HEI (Orig/Dest: studs).

Further indicators are the gross domestic product (GDP) (Orig/Dest: GI) at the home and destination district. GDP reflects potential differences in terms of economic prosperity that are also closely related to employability (Sá *et al.* 2004; Dotti *et al.* 2013). Last but not least, we consider tuition fees at the HEI and HEIs of students' districts of origin (Orig/Dest: tuition fee). Some federal states have implemented these in the years after 2008/2009. Tuition fees are implemented state-wide, and hence, they are implemented into the model utilizing state dummies for students' states of origin and for that of the potential HEI. Notably, tuition fees are relatively low (~1000 € per year) and were introduced and abandoned at different

times during the observational period implying that they are not time invariant. This circumstance is considered in our model for the period after 2009. The abbreviations of the variables and descriptions can be found in Table 1 in the Appendix.

RESULTS ON SPATIAL FACTORS IMPACTING STUDENTS' MOBILITY

To get an impression of the development of the higher education system in Germany, Figure 1 gives an overview of the development of student numbers from 1995 to 2015. It visualizes the rapid increase in Bachelor's students since 2000, especially in the field of engineering sciences. Student numbers in natural sciences instead seem to have stabilized since 2011, whereas business studies still shows a steady growth in student numbers. Diploma student numbers remained stable until 2005. Notably, the transition seems to have been quicker in the natural sciences and in business studies. Schuster *et al.* (2013) relate the late transition of engineering programmes to the strong image assigned to the 'Dipl.-Ing.' degree. In addition, significant numbers of Master students are observable from 2010 because total numbers from the pairs of the district to HEI were too small for the previous years. Therefore, we start our statistical models from 2010 onwards.

Tables 2–4 show the results for the three different fields of study for universities (results for UAS are available in Tables S1–S3 in the supplemental material). The GDP of origin regions (Orig:GDP) is more complex and interrelated with student mobility as expected. For business studies students at universities, who come from economically more successful regions, there is a tendency toward higher mobility. However, this trend becomes weaker after the implementation of the BP (Table 2). For every other field of study and UAS, one can see that the weaker the economic performance of the origin region the more mobile the students get, especially after the BP (Tables 3–7). There are only some exceptions for Diploma students of business studies at UAS and Bachelor students of natural sciences at UAS and university in the

Table 1. Variable descriptions.

Variable	Description
<i>log(distance)</i>	Logged distance from the centroid of the home district to HEI
<i>Within state</i>	Dummy for mobility within the state (0 = no, 1 = yes)
<i>West-East</i>	Dummy for mobility from west to East Germany (0 = no, 1 = yes)
<i>East-West</i>	Dummy for mobility from east to West Germany (0 = no, 1 = yes)
<i>Orig:agglomeration</i>	Dummy for an origin in agglomeration (0 = no, 1 = yes)
<i>Dest:agglomeration</i>	Dummy for agglomeration as a destination (0 = no, 1 = yes)
<i>Orig:rural</i>	Dummy for the rural region as the origin (0 = no, 1 = yes)
<i>Dest:rural</i>	Dummy for the rural region as a destination (0 = no, 1 = yes)
<i>HEI type</i>	Dummy for HE type university and UAS (0 = no, 1 = yes)
<i>log(Dest:studs field of study)</i>	Logged Number of students in the field of study at the HEI
<i>log(Dest:studs)</i>	Logged total number of students at the HEI
<i>log(Dest:pop)</i>	Logged total population at HEI district
<i>log(Dest:pop density)</i>	Logged population density at HEI district
<i>log(diff pop density)</i>	Logged difference between population density at home and HEI district
<i>log(Orig:pop)</i>	Logged total population at home district
<i>log(Orig:pop density)</i>	Logged population density at home district
<i>log(Orig:GDP)</i>	Logged gross domestic product at home district
<i>log(Dest:GDP)</i>	Logged gross domestic product at HEI district
<i>Dest:tuition fee</i>	Dummy for tuition fee at HEI district (0 = no, 1 = yes)
<i>Orig:tuition fee</i>	Dummy for tuition fee at home district (0 = no, 1 = yes)

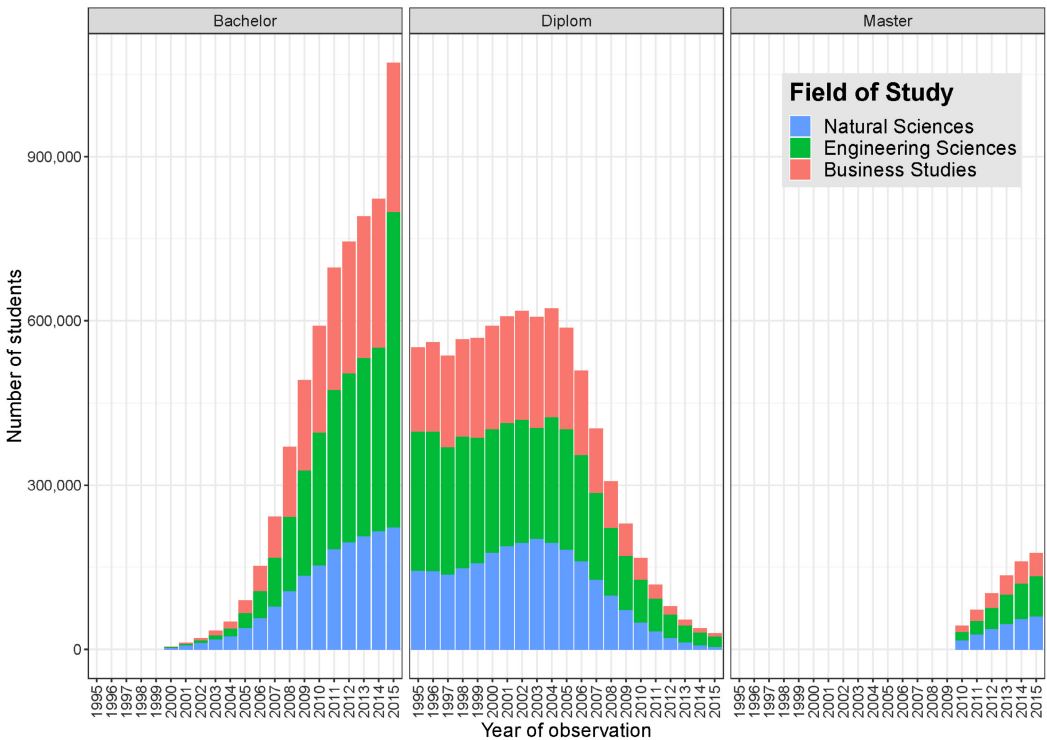


Figure 1. Development of student numbers of different fields of study and degree types from 1995–2015.

phase of transition (Tables 3 and 5), but effect sizes related to Orig:GDP are small.

Another interesting finding is the connection of east-west and west-east mobility for the different fields of study and HEI type. Except for engineering students at UAS, all Bachelor students are highly attracted to move from West to East, especially during the phase of transition. There are several potential reasons for this. For instance, it could be explained by the different speed of spread of Bachelor programmes across Germany, the available student places, lower costs of living, and the better student-to-teacher-ratio in East Germany (Lewin & Pasternack 2007). However, there is no general tendency for an East-West or West-East migration of students across the different fields of study and HEI type which is different from the case of Italy with its strong south-north mobility trends (Dotti *et al.* 2013). Since we do not have additional information on the underlying causes for the significant results of the West-East migration of students, we have to leave it to future research to shed more light on this observation needs to explore the reasons behind it.

Differences in population density and total numbers in population do not seem to matter significantly across the different fields of study and HEI types. This circumstance does not differ from the mobility behaviour of Diploma students before Bologna. Students of different fields of study and different HEI types vary considerably between degree types and across time. In comparison to other countries, tuition fees (models with +sf) are found to play a complex role in Germany. Our empirical results suggest that they have a much lower impact on the decisions of students where to move for their study programmes. In fact, in the case of Bachelor and Master students in the field of business studies, higher tuition fees even seem to attract students (Tables 2 and S1)! Similar results are yielded for Bachelor students of natural sciences at UAS (Table S2). This contradicts our expectations and the results of Dwenger *et al.* (2012) and Alecke and Mitze (2012). While it is beyond the scope of the present paper to analyse this in greater depth, we believe that this effect is caused by the relatively (to other countries) lower magnitude of the fees

and the potential signalling effect of tuition fees, as indications of better learning environments. Students from different fields of study and HEI type react differently to this issue which needs further clarification.

RESULTS ON MOBILITY AND EFFECTS OF BP

We hypothesized that students in general and master students in particular are increasingly attracted by good economic situations in HEI regions. This is not confirmed in all our models implying that students are not generally attracted by economically well-off districts. Only Diploma students of business studies at UAS after 2009 (Table S1), Diploma students of natural sciences at universities and engineering at UAS and Bachelor students of engineering in the phase of transition, are attracted by high GDP in the destination region. However, Master students seem to be less repelled by higher GDP and accompanied higher costs of living in destination regions than Bachelor students after 2009, except for students of natural sciences at universities. This finding is in line with previous studies for the transition from Bachelor to Master in Germany (Lörz *et al.* 2015): The more advanced the study progress, the higher the costs for students in general. Consequently, students in Master programmes do not tend to study in regions with higher GDPs because living expenses are higher in these regions. If we consider students' orientation towards agglomerations and their associated thicker labour markets, one can see that only Master students of business studies at universities are attracted by agglomerations in general. This finding shows the discrepancies between fields of study and HEI types as well as the changing mobility patterns due to the BP. More precise, we observe a positive trend related to the number of students in the field of study (*Dest:studs field of study*) at students' destinations for all fields of study and HEI types. Nevertheless, the size of HEI (*Dest:studs*) only matters for Master students of business studies and Bachelor and Master students of engineering at universities. We suspect that the attraction of size is due to its correlation with reputation and research resources, which

Table 2. Results business studies students at universities.

Statistical models									
	Prior 2002	2003 to 2008	After 2009	After 2009	2003 to 2008	After 2009	After 2009	After 2009	After 2009
	Dipl	Dipl	Dipl	Dipl(+sf)	BA	BA	BA	BA(+sf)	MA(+sf)
Intercept	-3.76 (0.08)***	-3.36 (0.05)***	-2.45 (0.15)***	-2.67 (0.16)***	-1.01 (0.12)***	1.63 (0.06)***	1.59 (0.06)***	0.67 (0.14)***	0.60 (0.14)***
log(distance)	-0.75 (0.00)***	-0.71 (0.00)***	-0.56 (0.00)***	-0.56 (0.00)***	-0.56 (0.00)***	-0.62 (0.00)***	-0.62 (0.00)***	-0.48 (0.00)***	-0.48 (0.00)***
Within state	0.51 (0.01)***	0.51 (0.00)***	0.24 (0.01)***	0.25 (0.01)***	0.28 (0.01)***	0.45 (0.00)***	0.46 (0.00)***	0.24 (0.01)***	0.23 (0.01)***
West-East	-0.07 (0.02)**	-0.07 (0.01)***	-0.08 (0.04)*	-0.06 (0.04)	0.06 (0.03)*	0.24 (0.01)***	0.30 (0.01)***	-0.09 (0.03)***	-0.05 (0.03)
East-West	-0.28 (0.03)***	-0.31 (0.01)***	-0.05 (0.02)	-0.05 (0.03)*	-0.46 (0.04)***	-0.31 (0.01)***	-0.38 (0.01)***	-0.34 (0.03)***	-0.42 (0.03)***
Orig:agglomeration	0.09 (0.01)***	0.06 (0.00)***	-0.04	-0.04	-0.08	-0.09	-0.09	-0.18	-0.17
Dest:agglomeration	-0.22 (0.01)***	-0.21 (0.00)***	-0.20	-0.18	-0.12	-0.09	-0.10	0.06 (0.01)***	0.05 (0.01)***
Orig:rural	0.19 (0.01)***	0.16 (0.00)***	0.12 (0.01)***	0.12	-0.01 (0.01)	0.05 (0.00)***	0.05 (0.00)***	0.14 (0.01)***	0.13 (0.01)***
Dest:rural	-0.02 (0.01)*	-0.03 (0.01)***	0.08 (0.02)***	0.07	0.15 (0.01)***	-0.09	-0.10	-0.10	-0.10
log(Orig:studs field of study)	0.25 (0.01)***	0.35 (0.01)***	0.44 (0.01)***	0.44	0.40 (0.01)***	0.48 (0.01)***	0.48 (0.01)***	0.28 (0.01)***	0.27 (0.01)***
log(Dest:studs field of study)	0.62 (0.01)***	0.58 (0.00)***	0.55 (0.01)***	0.56	0.47 (0.01)***	0.46 (0.00)***	0.46 (0.00)***	0.46 (0.01)***	0.47 (0.01)***
log(Orig:studs)	-0.05 (0.01)***	-0.11 (0.01)***	-0.12 (0.01)***	-0.13	-0.22	-0.05	-0.05	-0.05	-0.04
log(Dest:studs)	-0.08 (0.01)***	-0.04 (0.00)***	-0.24 (0.01)***	-0.25	-0.01 (0.01)	-0.01 (0.00)	-0.01 (0.00)	0.04 (0.01)***	0.03 (0.01)***
log(Orig:pop)	0.33 (0.01)***	0.35 (0.00)***	0.29 (0.01)***	0.29	0.32 (0.01)***	0.17 (0.00)***	0.17 (0.00)***	0.32 (0.01)***	0.32 (0.01)***
log(Dest:pop)	-0.04 (0.00)***	-0.07 (0.00)***	0.08 (0.01)***	0.07	-0.07 (0.01)***	-0.12 (0.00)***	-0.13 (0.00)***	-0.15 (0.01)***	-0.15 (0.01)***
log(Diff pop density)	0.06 (0.00)***	0.06 (0.00)***	0.06 (0.00)***	0.06	-0.00 (0.00)	0.05 (0.00)***	0.05 (0.00)***	-0.02 (0.00)***	-0.02 (0.00)***

(Continues)

Table 2 (Continued)

Statistical models									
	Prior 2002 Dipl	2003 to 2008 Dipl	After 2009 Dipl	After 2009 Dipl(+sf)	2003 to 2008 BA	After 2009 BA	After 2009 BA(+sf)	After 2009 MA	After 2009 MA (+sf)
log(Orig:GDP)	0.38 (0.02)***	0.19 (0.01)***	0.12 (0.03)***	0.15 (0.03)***	0.23 (0.02)***	0.14 (0.01)***	0.14 (0.01)***	0.05 (0.02)*	0.05 (0.02)*
log(Dest:GDP)	-0.13 (0.02)***	-0.07 (0.01)***	-0.11 (0.03)**	-0.04 (0.03)	-0.22 (0.02)***	-0.75 (0.01)***	-0.71 (0.01)***	-0.66 (0.03)***	-0.63 (0.03)***
year_dummy_2001	-0.01 (0.00)**	-0.02 (0.00)			-0.16 (0.03)***				
year_dummy_2003					-0.21 (0.03)***				
year_dummy_2004					-0.30 (0.03)***				
year_dummy_2005		-0.01 (0.00)*			-0.30 (0.03)***				
year_dummy_2006		0.02 (0.01)***			-0.50 (0.03)***				
year_dummy_2007		0.05 (0.01)***			-0.69 (0.03)***				
year_dummy_2008		0.13 (0.01)***			-0.78 (0.03)***				
year_dummy_2010			0.21 (0.01)***	0.21 (0.01)***		-0.03 (0.01)***	-0.03 (0.01)***		
year_dummy_2011			0.30 (0.01)***	0.30 (0.01)***		-0.04 (0.01)***	-0.04 (0.01)***	-0.12 (0.02)***	-0.12 (0.02)***
year_dummy_2012			0.70 (0.01)***	0.68 (0.02)***		-0.05 (0.01)***	-0.06 (0.01)***	-0.17 (0.02)***	-0.19 (0.02)***
year_dummy_2013			0.87 (0.02)***	0.85 (0.02)***		-0.06 (0.01)***	-0.07 (0.01)***	-0.21 (0.02)***	-0.22 (0.02)***
year_dummy_2014			0.99 (0.02)***	0.96 (0.02)***		-0.03 (0.01)***	-0.06 (0.01)***	-0.21 (0.02)***	-0.24 (0.02)***
Orig:tuition fee				-0.06 (0.02)***					-0.14 (0.01)***
Dest:tuition fee				-0.00 (0.01)			0.10 (0.00)***		0.11 (0.01)***
AIC	187,935.28	560,615.97	79,693.50	79,528.26	122,143.18	503,718.45	495,675.31	113,100.06	112,815.58
Log Likelihood	-93,929.64	-280,259.98	-39,800.75	-39,714.13	-61,023.59	-251,813.22	-247,787.66	-56,506.03	-56,359.79

(Continues)

Table 2 (Continued)

Statistical models									
	Prior 2002 Dipl	2003 to 2008 Dipl	After 2009 Dipl	After 2009 Dipl(+sf)	2003 to 2008 BA	After 2009 BA	After 2009 BA(+sf)	After 2009 MA	After 2009 MA(+sf)
Num. obs.	47,881	170,004	85,381	85,381	81,249	156,760	156,760	119,726	119,726

*** $p < 0.001$; ** $p < 0.01$; * $p < 0.05$.

appear to be more highly valued by students of business studies and engineering. Moreover, large universities are often located in agglomerations and thereby provide easier access to prolific labour regions, which appears to be more essential to Master students of business studies. Furthermore, students at UAS are highly attracted by rural UAS, especially for Master programmes. This finding could be connected to the results by Busch and Weigert (2010) who verified a strong connection of UAS to local labour markets. Nevertheless, we must reject hypothesis H1, as the economic attractiveness of HEI destinations is not more important for Master students in all cases studied.

In contrast to hypothesis H1, our results confirm hypothesis H2. In general, students are less influenced by *distance* when deciding about where to take up their studies today compared to the past. This is particularly true for students of Bachelor and Master programmes and less so for students of Diploma programmes. This tendency is consistent across the transition and the phase after implementation. Accordingly, it seems to be the case that the increasing fragmentation of study programmes spurs the spatial mobility of students, which strengthens the idea of a ‘Bologna-Drain’ (Gareis *et al.* 2018). This is visible by the weaker effect of the variable *Within state* for Bachelor students in the phase of transition in contrast to the phase after the implementation of the BP (Tables 2–4 and S1–S3). However, an approximation of the within-state mobility (*Within state*) to the prior BP time is only apparent for Bachelor programmes after 2009 and not for Master programmes in general. Our findings clearly support our hypothesis. In particular, we find Master students to be more mobile, that is, less constrained by distance, than students at the Bachelor level. This is also in line with Heine (2012) and support the idea of the decision where to start a Master’s programme being made more consciously and independently of social factors (de Boer *et al.* 2010). Across all fields of study, HEI, and types of degrees, *distance* is always having a deterring effect on student mobility (significantly negative coefficient). The same holds for study locations within the same federal state of students’ regions of origin (*Within state*). Here, we also find a positive coefficient in the models for

Table 3. Results natural sciences students at universities.

	Statistical models							
	Prior 2002 Dipl	2003 to 2008 Dipl	After 2009 Dipl(+sf)	2003 to 2008 BA	After 2009 BA	After 2009 BA(+sf)	After 2009 MA	After 2009 MA(+sf)
Intercept	-3.66 (0.07)***	-3.89 (0.04)***	-1.85 (0.10)***	-1.89 (0.08)***	-1.37 (0.05)***	-1.55 (0.05)***	0.26 (0.11)*	0.09 (0.11)
log(distance)	-0.71 (0.00)***	-0.70 (0.00)***	-0.59 (0.00)***	-0.63 (0.00)***	-0.67 (0.00)***	-0.67 (0.00)***	-0.55 (0.00)***	-0.55 (0.00)***
Within state	0.90 (0.01)***	0.87 (0.00)***	0.70 (0.01)***	0.48 (0.01)***	0.84 (0.00)***	0.85 (0.00)***	0.53 (0.01)***	0.54 (0.01)***
West-East	-0.19 (0.02)***	-0.24 (0.01)***	-0.23 (0.03)***	-0.01 (0.02)	-0.00 (0.01)	0.00 (0.01)	-0.03 (0.02)	-0.02 (0.02)
East-West	-0.48 (0.03)***	-0.46 (0.01)***	-0.22 (0.04)***	-0.54 (0.06)***	-0.07 (0.01)***	-0.08 (0.01)***	-0.27 (0.03)***	-0.28 (0.03)***
Orig:agglomeration	-0.01 (0.01)	-0.01 (0.00)	-0.06 (0.01)***	-0.00 (0.01)	-0.07 (0.00)***	-0.08 (0.00)***	-0.04 (0.01)***	-0.05 (0.01)***
Dest:agglomeration	-0.03 (0.01)***	-0.08 (0.00)***	-0.07 (0.01)***	-0.05 (0.01)***	-0.05 (0.00)***	-0.05 (0.00)***	-0.01 (0.01)	-0.02 (0.01)*
Orig:rural	0.19 (0.01)***	0.18 (0.00)***	0.06 (0.01)***	0.16 (0.01)***	0.17 (0.00)***	0.17 (0.00)***	0.13 (0.01)***	0.13 (0.01)***
Dest:rural	0.03 (0.01)***	0.04 (0.00)***	0.06 (0.01)***	0.08 (0.01)***	0.01 (0.00)**	0.01 (0.00)	0.08 (0.01)***	0.06 (0.01)***
log(Orig:studs field of study)	0.32 (0.01)***	0.24 (0.01)***	0.32 (0.01)***	0.35 (0.01)***	0.41 (0.01)***	0.41 (0.01)***	0.32 (0.01)***	0.32 (0.01)***
log(Dest:studs field of study)	0.61 (0.01)***	0.59 (0.00)***	0.50 (0.00)***	0.51 (0.00)***	0.51 (0.00)***	0.51 (0.00)***	0.46 (0.00)***	0.47 (0.00)***
log(Orig:studs)	-0.15 (0.01)***	-0.09 (0.01)***	-0.11 (0.01)***	-0.17 (0.01)***	-0.15 (0.01)***	-0.15 (0.01)***	-0.08 (0.01)***	-0.09 (0.01)***
log(Dest:studs)	-0.11 (0.01)***	-0.08 (0.00)***	-0.11 (0.01)***	-0.16 (0.01)***	-0.10 (0.00)***	-0.10 (0.00)***	-0.03 (0.01)***	-0.03 (0.01)***
log(Orig:pop)	0.42 (0.01)***	0.47 (0.00)***	0.39 (0.01)***	0.43 (0.01)***	0.38 (0.00)***	0.39 (0.00)***	0.33 (0.01)***	0.33 (0.01)***
log(Dest:pop)	-0.06 (0.00)***	-0.07 (0.00)***	-0.02 (0.00)***	-0.03 (0.00)***	-0.04 (0.00)***	-0.05 (0.00)***	-0.08 (0.00)***	-0.08 (0.00)***
log(Diff:pop density)	0.03 (0.00)***	0.04 (0.00)***	0.08 (0.00)***	0.07 (0.00)***	0.04 (0.00)***	0.04 (0.00)***	0.03 (0.00)***	0.03 (0.00)***
log(Orig:GDP)	0.08 (0.01)***	-0.05 (0.01)***	-0.12 (0.02)***	0.05 (0.02)**	-0.08 (0.01)***	-0.06 (0.01)***	-0.09 (0.02)***	-0.07 (0.02)***
log(Dest:GDP)	-0.02 (0.01)	0.04 (0.01)***	-0.21 (0.02)***	-0.13 (0.02)***	-0.31 (0.01)***	-0.28 (0.01)***	-0.50 (0.02)***	-0.46 (0.02)***
year_dummy_2001	0.00 (0.00)							
year_dummy_2003		-0.01 (0.00)**		-0.08 (0.02)***				
year_dummy_2004		-0.00 (0.00)		-0.13 (0.02)***				
year_dummy_2005		0.00 (0.00)		-0.20 (0.02)***				
year_dummy_2006		0.00 (0.00)		-0.26 (0.02)***				
year_dummy_2007		0.00 (0.00)		-0.34 (0.02)***				
year_dummy_2008		0.03 (0.01)***		-0.37 (0.02)***				
year_dummy_2010			0.08 (0.01)***	0.02 (0.00)***	0.02 (0.00)***	0.02 (0.00)***		
year_dummy_2011			0.15 (0.01)***	0.04 (0.00)***	0.04 (0.00)***	0.04 (0.00)***	-0.04 (0.01)***	-0.04 (0.01)***
year_dummy_2012			0.24 (0.01)***	0.06 (0.00)***	0.06 (0.00)***	0.04 (0.00)***	-0.06 (0.01)***	-0.09 (0.01)***
year_dummy_2013			0.29 (0.02)***	0.07 (0.00)***	0.07 (0.00)***	0.04 (0.01)***	-0.07 (0.01)***	-0.11 (0.01)***
year_dummy_2014			0.36 (0.02)***	0.09 (0.00)***	0.09 (0.00)***	0.04 (0.01)***	-0.07 (0.01)***	-0.13 (0.01)***
Orig:tuition fee			0.03 (0.01)**	0.03 (0.01)***		-0.06 (0.00)***		-0.08 (0.01)***
Dest:tuition fee			-0.23 (0.01)***	-0.02 (0.00)***		-0.02 (0.00)***		0.00 (0.01)
AIC	229,408.58	727,790.53	148,510.65	183,709.13	602,968.34	600,081.24	151,350.70	150,572.57
Log Likelihood	-114,666.29	-363,847.27	-74,209.33	-91,806.57	-301,438.17	-299,990.62	-75,631.35	-75,238.28

(Continues)

Table 3. (Continued)

Statistical models		After 2009 Dipl(+sf)	2003 to 2008 BA	After 2009 BA	After 2009 BA(+sf)	After 2009 MA	After 2009 MA (+sf)
Num. obs.	Prior 2002 Dipl	184,338	137,176	170,959	170,959	131,256	131,256
	2003 to 2008 Dipl	137,176	146,047	170,959	170,959	131,256	131,256
	2003 to 2008 BA	146,047	170,959	170,959	170,959	131,256	131,256
	2003 to 2008 BA	146,047	170,959	170,959	170,959	131,256	131,256
	2003 to 2008 BA	146,047	170,959	170,959	170,959	131,256	131,256
	2003 to 2008 BA	146,047	170,959	170,959	170,959	131,256	131,256

*** $p < 0.001$; ** $p < 0.01$; * $p < 0.05$.

Bachelor and Diploma students. Notably, the effect sizes differ substantially. Distance effects are strongest for all Bachelor students at both HEI types after the system transition in 2009. Whereas between 2003 and 2008, the effects differ between fields of study and HEI type: Diploma students here are more negatively impacted in their mobility than are Bachelor students. The distance effect is most substantial for Bachelor students in the field of engineering of UAS in the period after 2009 (Table S3). It is rather weak for Diploma students of natural science at UAS (Table S2).

New and heterogeneous Bachelor programmes may have attracted many students and therefore acted as pull factors for HEI entrants during the transition phase. Subsequently to this phase, the ‘novelty’ effect levelled off and mobility patterns adjusted to the initial ones during the ‘Diploma’ era before 2002. This interpretation is supported by the significantly negative coefficients of Within state. Interestingly, we observe Diploma students to be more likely to leave their home states to study after the implementation of the BP than prior to this process. Most likely, this is due to the excellent reputation of the Diploma degrees (Schuster *et al.* 2013). The finding can be seen as an indication that (some) students value certain types of degrees more than the attractiveness of regions. All in all, we do not find Bachelor students to reveal a preference to study in their home region that goes beyond that of Diploma students. In other words, the BP did not stimulate Bachelor student mobility across larger distances. This contrasts the effect of the BP on Master students which is in line with our hypothesis H2, the reform made geographic mobility easier and more attractive.

DISCUSSION

Our results do not show the expected shake-up of existing student mobility patterns due to this transition. The nearest indication of such is observed for business studies students: Bachelor and Master students here show different behaviours than their counterparts studying Diploma programmes before the transition. For this field of study, we partly confirm earlier findings based on questionnaires (Krawietz

Table 4. Results engineering students at universities.

Statistical models									
	Prior	2002 Dipl	2003 to 2008 Dipl	After 2009 Dipl	2003 to 2008 BA	After 2009 BA	After 2009 BA(+sf)	After 2009 MA	After 2009 MA(+sf)
Intercept	-6.37 (0.09)***	-4.99 (0.05)***	-0.05 (0.10)	-1.87 (0.11)***	-7.26 (0.15)***	-4.55 (0.06)***	-5.09 (0.06)***	-3.98 (0.13)***	-4.55 (0.14)***
log(distance)	-0.56 (0.00)***	-0.59 (0.00)***	-0.51 (0.00)***	-0.51 (0.00)***	-0.53 (0.00)***	-0.57 (0.00)***	-0.57 (0.00)***	-0.49 (0.00)***	-0.49 (0.00)***
Within state	1.10 (0.01)***	0.96 (0.00)***	1.02 (0.01)***	1.07 (0.01)***	0.68 (0.01)***	1.22 (0.00)***	1.23 (0.00)***	0.90 (0.01)***	0.91 (0.01)***
West-East	-0.31 (0.03)***	-0.44 (0.01)***	-0.49 (0.03)***	-0.49 (0.03)***	0.22 (0.05)***	-0.50 (0.01)***	-0.53 (0.02)***	-0.33 (0.03)***	-0.31 (0.03)***
East-West	-0.33 (0.02)***	-0.45 (0.01)***	-0.73 (0.01)***	-0.71 (0.01)***	-0.35 (0.04)***	-0.03 (0.01)***	0.01 (0.01)	-0.10 (0.03)***	-0.09 (0.03)***
Orig:agglomeration	-0.13 (0.01)***	-0.03 (0.00)***	-0.07 (0.01)***	-0.08 (0.01)***	-0.18 (0.01)***	-0.12 (0.00)***	-0.14 (0.00)***	-0.13 (0.01)***	-0.14 (0.01)***
Dest:agglomeration	0.01 (0.01)	-0.00 (0.01)	0.27 (0.01)***	0.24 (0.01)***	-0.32 (0.02)***	-0.18 (0.01)***	-0.19 (0.01)***	-0.22 (0.01)***	-0.26 (0.01)***
Orig:rural	0.20 (0.01)***	0.21 (0.00)***	0.14 (0.01)***	0.11 (0.01)***	0.21 (0.01)***	0.20 (0.00)***	0.19 (0.00)***	0.24 (0.01)***	0.24 (0.01)***
Dest:rural	0.30 (0.01)***	0.22 (0.01)***	0.20 (0.01)***	0.11 (0.01)***	0.22 (0.02)***	0.22 (0.01)***	0.18 (0.01)***	0.14 (0.02)***	0.11 (0.02)***
log(Orig:studs field of study)	0.00 (0.01)	0.14 (0.00)***	0.26 (0.00)***	0.24 (0.00)***	0.39 (0.01)***	0.28 (0.00)***	0.29 (0.00)***	0.28 (0.01)***	0.29 (0.01)***
log(Dest:studs field of study)	0.71 (0.01)***	0.65 (0.00)***	0.75 (0.00)***	0.75 (0.00)***	0.54 (0.01)***	0.71 (0.00)***	0.72 (0.00)***	0.64 (0.01)***	0.64 (0.01)***
log(Orig:studs)	0.12 (0.01)***	0.00 (0.01)	0.21 (0.01)***	0.19 (0.01)***	-0.40 (0.01)***	0.00 (0.01)	-0.03 (0.01)***	0.03 (0.01)***	0.02 (0.01)***
log(Dest:studs)	-0.00 (0.01)	0.02 (0.00)***	-0.22 (0.01)***	-0.25 (0.01)***	0.21 (0.01)***	0.05 (0.00)***	0.03 (0.00)***	0.04 (0.01)***	0.02 (0.01)***
log(Orig:pop)	0.48 (0.01)***	0.47 (0.00)***	0.21 (0.01)***	0.23 (0.01)***	0.66 (0.01)***	0.37 (0.00)***	0.37 (0.00)***	0.36 (0.01)***	0.36 (0.01)***
log(Dest:pop)	0.06 (0.00)***	0.01 (0.00)***	0.09 (0.00)***	0.10 (0.00)***	-0.09 (0.01)***	-0.03 (0.00)***	-0.03 (0.00)***	0.03 (0.01)***	0.04 (0.01)***
log(Diff:pop density)	-0.06 (0.00)***	-0.01 (0.00)***	0.05 (0.00)***	0.04 (0.00)***	-0.07 (0.00)***	0.03 (0.00)***	0.03 (0.00)***	0.01 (0.00)	0.00 (0.00)
log(Orig:GDP)	-0.27 (0.02)***	-0.38 (0.01)***	-0.54 (0.02)***	-0.37 (0.02)***	0.05 (0.03)	-0.16 (0.01)***	-0.10 (0.01)***	-0.28 (0.02)***	-0.24 (0.02)***
log(Dest:GDP)	-0.20 (0.02)***	-0.10 (0.01)***	-0.88 (0.02)***	-0.51 (0.02)***	0.27 (0.03)***	-0.34 (0.01)***	-0.22 (0.01)***	-0.35 (0.02)***	-0.21 (0.03)***
year_dummy_2001	0.01 (0.01)***								
year_dummy_2003		-0.09 (0.01)***			-0.31 (0.03)***				
year_dummy_2004		0.04 (0.01)***			-0.18 (0.02)***				
year_dummy_2005		0.03 (0.01)***			-0.26 (0.03)***				
year_dummy_2006		0.02 (0.01)***			-0.34 (0.03)***				
year_dummy_2007		0.02 (0.01)***			-0.58 (0.03)***				
year_dummy_2008		0.11 (0.01)***			-0.75 (0.03)***				
year_dummy_2010			0.10 (0.01)***	0.07 (0.01)***		-0.06 (0.01)***	-0.07 (0.01)***		
year_dummy_2011			0.20 (0.01)***	0.15 (0.01)***		-0.08 (0.01)***	-0.10 (0.01)***		
year_dummy_2012			0.27 (0.01)***	0.17 (0.01)***		-0.09 (0.01)***	-0.16 (0.01)***		
year_dummy_2013			0.39 (0.01)***	0.22 (0.01)***		-0.06 (0.01)***	-0.16 (0.01)***		
year_dummy_2014			0.54 (0.01)***	0.35 (0.01)***		-0.07 (0.01)***	-0.19 (0.01)***		
Orig:tuition fee				-0.16 (0.01)***			-0.04 (0.01)***		
Dest:tuition fee				-0.16 (0.01)***			-0.11 (0.01)***		

(Continues)

Table 4. (Continued)

	Statistical models									
	Prior 2002 Dipl	2003 to 2008 Dipl	After 2009 Dipl	2003 to 2008 Dipl (+sf)	2003 to 2008 BA	After 2009 BA	After 2009 BA (+sf)	After 2009 MA	After 2009 MA (+sf)	After 2009 MA (+sf)
AIC	122,461.44	457,607.36	147,179.10	144,717.97	62,634.19	470,219.20	467,161.08	100,860.62	100,524.99	100,524.99
Log Likelihood	-61,192.72	-228,755.68	-73,543.55	-72,308.99	-31,269.09	-235,063.60	-233,530.54	-50,386.31	-50,214.50	-50,214.50
Num. obs.	35,669	132,503	85,869	85,869	59,628	107,711	107,711	87,226	87,226	87,226

** $p < 0.001$; *** $p < 0.01$; ** $p < 0.05$.

2008; Heine 2012) and implications from studies on graduate migration in the Netherlands (Venhorst *et al.* 2010). However, we do not observe massive changes in student mobility for two other fields of study (engineering and natural sciences) and do not know anything about the many different fields of study which we did not investigate.

The study confirms the existence of substantial differences in students' mobility patterns with respect to their fields of study. For instance, the preference for agglomerations became much stronger for students of business studies than for students in engineering and natural sciences. Business study students and students of natural sciences are also more attracted to locations in the East of Germany than students of engineering. Similarly, we identify significant variance in the mobility patterns of students at universities and those at UAS. For instance, university students are more likely to stay in their home region than students at UAS who prefer studying in proximity to prolific labour markets. Most likely, UAS seem to be more specialized and more connected to local labour markets than are universities (Jaeger & Kopper 2014). Accordingly, if students are less likely to find a fitting study programme in their home region, they need to be spatially more mobile.

Our study has some significant shortcomings that need to be pointed out. First, while we can exploit a unique data source, it does have some limitations. Most notably, we cannot model the processes at the level where the actual locational choice is made: the level of the individual. It implies that we use a macro-level approach instead of a more appropriate individual-level study. Consequently, our study does not consider variations in individual characteristics such as age, gender, parental background and household incomes, which are known to play a major role in student mobility (Sá *et al.* 2004). We also cannot work with a true panel such that we can differentiate students making multiple moves and those that move just once. Naturally, their mobility patterns might be very different. All this will have to be addressed by future research utilizing individual-level data. However, even the macro-level approach is constrained by data limitations, as student flows of less than three students (given specific characteristics)

are not observed due to confidentiality reasons. However, we were able to track the mobility of students from three different fields of students and the two different university types in its entirety over a much longer period than studies from individual-level data (e.g., Faggian *et al.* 2007; Krabel & Flöther 2014).

CONCLUSIONS AND IMPLICATIONS

Our study investigates student mobility over a considerable period and identifies a number of (spatial) factors that shape these patterns. Noticeably, our results highlight the heterogeneity between fields of study that seems to be of much bigger relevance than the re-configuration of the system in the course of the transformation. Nevertheless, there is still a significant need for research on the long-term development of student mobility flows, especially for individual characteristics (Perna 2006). However, we have yet to learn about what role these play in times of system transitions. For instance, students with limited economic resources might react differently to the transition than those that are economically better off (Lörz *et al.* 2015). In addition, there is still a high demand for research on student mobility on a small scale that explores in more detail intra-state and intra-regional mobility (Alm/Winters 2009). Such studies may also consider HEIs' heterogeneity in terms of research and teaching quality to a larger degree than what our data allowed us to do. For example, such studies may be able to analyse the roles of rankings or word-of-mouth in students' decisions (Ciriaci 2014; Bratti & Verzillo 2019).

In addition to more research, there are several further implications that can be drawn from our study. Most importantly, distance (still) matters. That is, local embeddedness, information asymmetries and preferences for staying at home are strong factors potentially preventing an optimal allocation (match between the place of study and personal characteristics) of students. Further increasing the availability of information on study programmes and locations will potentially reduce geography's relevance. Of similar importance is the finding that urban regions and economic agglomerations are more

attractive to particular sets of students. While we observed only students of business studies to be particularly attracted to economically more prosperous regions, we have little doubt that similar results would be yielded for other groups of students. Consequently, by increasing the opportunities for spatial mobility, the Bologna reform has further added to the already large advantages of these areas and thereby fuelled spatial inequality. To what extent this effect can be countered and potentially be compensated is yet to be explored.

Lastly, by making data on student mobility more easily accessible, political entities will not only help researchers on the matter, but it may also help HEI in sharpening their marketing efforts. Faggian and Franklin (2014) describe that the ability of policymakers, HEIs and their related regions to attract students is as important as attracting graduates. Therefore, data availability could help to create appropriate actions which not just relate to the own data in the HEIs, but in times of increasing competition could help to identify successful and less successful strategies and evaluate them over time. Again, it might also help in addressing the concentration of students in prosperous regions, as it will allow HEI in less well-off regions to more precisely target students for which they offer the best student conditions and programmes. In this context, it may also help students to make more informed choices and deviate from potential herd-behaviour that most likely benefits well-known HEI in prominent regions.

Acknowledgment

Open access funding enabled and organized by ProjektDEAL.

Notes

- ¹ Of 19,559 degree-programmes there are 8832 Bachelor and 9113 Master degree programmes in the fall term 2018/2019 (HRK 2018).
- ² The primary difference between universities and UAS is that UAS are not allowed to grant Ph.D. degrees, and, therefore, basic research is still being dominated by traditional universities.
- ³ The Vuong test has a significant *z*-test, and, therefore, the zero-inflated-Poisson model is preferred to the standard Poisson model.

REFERENCES

- ABEL, J.R. & R. DEITZ (2012), Do Colleges and Universities Increase Their Region's Human Capital? *Journal of Economic Geography* 12, pp. 667–691.
- ALECKE, B. & T. MITZE (2012), Studiengebühren und das Wanderungsverhalten von Studienanfängern: eine panel-ökonometrische Wirkungsanalyse. *Perspektiven der Wirtschaftspolitik* 13, pp. 357–386.
- ALM, J. & J.V. WINTERS (2009), Distance and Intrastate College Student Migration. *Economics of Education Review* 28, pp. 728–738.
- ANDREWS, M. (2020), *How Do Institutions of Higher Education Affect Local Invention? Evidence from the Establishment of U.S. Colleges*. Available at <<https://ssrn.com/abstract=3072565>>. Accessed on 28 March 2020.
- AUSPRUNG, K. & T. HINZ (2011), Master für Alle? Der Einfluss sozialer Herkunft auf den Studienverlauf und das Übertrittsverhalten von Bachelorstudierenden. *Soziale Welt* 62, pp. 75–99.
- BBSR (2009), *Laufende Raumberechnungen – Abgrenzungen*. Available at <<https://www.bbsr.bund.de/BBSR/DE/Raumberechnung/Raumberechnungen/SiedlungsstrukturelleGebietstypen/Regionstypen/regionstypen.html>>. Accessed on 25 November 2020.
- BMBF (2020), *Daten Bildung, Hochschulen, Studierende*. Available at <<https://www.datenportal.bmbf.de/portal/de/K254.html>>. Accessed on 14 December 2020.
- BRATTI, M. & S. VERZILLO (2019), The 'Gravity' of Quality: Research Quality and the Attractiveness of Universities in Italy. *Regional Studies* 53, pp. 1385–1396.
- BUENSTORF, G., M. GEISSLER & S. KRABEL (2016), Locations of Labor Market Entry by German University Graduates: Is (Regional) Beauty in the Eye of the Beholder? *Review of Regional Research* 36, pp. 29–49.
- BUSCH, O. & B. WEIGERT (2010), Where Have All the Graduates Gone? Internal Cross-State Migration of Graduates in Germany 1984–2004. *Annals of Regional Science* 44, pp. 559–572.
- CAPELLARI, L. & C. LUCIFORA (2009), The “Bologna Process” and College Enrollment Decisions. *Labour Economics* 16, pp. 638–647.
- CIRIACI, D. (2014), Does University Quality Influence the Interregional Mobility of Students and Graduates? The Case of Italy. *Regional Studies* 48, pp. 1592–1608.
- COOKE, T.J. & P. BOYLE (2011), The Migration of High School Graduates to College. *Educational Evaluation and Policy Analysis* 33, pp. 202–213.
- DE BOER, H., R. KOLSTER & H. VOSSENSTEYN (2010), Motives Underlying Bachelors-Masters Transitions: The Case of Dutch Degree Stackers. *Higher Education Policy* 23, pp. 381–396.
- DENZLER, S. & S.C. WOLTER (2010), Der Einfluss des lokalen Hochschulangebots auf die Studienwahl. *Zeitschrift für Erziehungswissenschaft* 13, pp. 683–706.
- DESJARDINS, S.L. & R.K. TOUTKOUSIAN (2005), Are Students Really Rational? The Development of Rational Thought and its Application to Student Choice. In: J.C. Smart, ed., *Higher Education: Handbook of Theory and Research*, pp. 191–240. Dordrecht: Springer.
- DESTATIS (2019), *Namens- und Gebietsänderungen der Gemeinden*. Available at <<https://www.destatis.de/DE/Themen/Laender-Regionen/Regionales/Gemeindeverzeichnis/Namens-Grenz-Aenderung/namens-grenz-aenderung.html>>. Accessed on 18 November 2020.
- DOTTI, N.F., U. FRATESI, C. LENZI & M. PERCOCO (2013), Local Labour Markets and the Interregional Mobility of Italian University Students. *Spatial Economic Analysis* 8, pp. 443–468.
- DOTTI, N.F., U. FRATESI, C. LENZI & M. PERCOCO (2014), Local Labour Market Conditions and the Spatial Mobility of Science and Technology University Students: Evidence from Italy. *Review of Regional Research* 34, pp. 119–137.
- DWENGER, N., J. STORCK & K. WROHLICH (2012), Do Tuition Fees Affect the Mobility of University Applicants? Evidence from a Natural Experiment. *Economics of Education Review* 31, pp. 155–167.
- ELDER, G.H., M.K. JOHNSON & R. CROSNOR (2003), The Emergence and Development of Life Course Theory. In: Mortimer, J.T. & M.J. Shanahan eds., *Handbook of the Life Course. Handbooks of Sociology and Social Research*, pp. 3–19. Boston, MA: Springer.
- FAGGIAN, A. & R.S. FRANKLIN (2014), Human Capital Redistribution in the USA: The Migration of the College-Bound. *Spatial Economic Analysis* 9, pp. 376–395.
- FAGGIAN, A., P. MCCANN & S. SHEPPARD (2007), Human Capital, Higher Education and Graduate Migration: An Analysis of Scottish and Welsh Students. *Urban Studies* 44, pp. 2511–2528.
- FIELDING, A.J. (1992), Migration and Social Mobility: South East England as an Escalator Region. *Regional Studies* 26, pp. 1–15.

- FLORIDA, R., C. MELLANDER & K. STOLARICK (2008), Inside the Black Box of Regional Development—Human Capital, the Creative Class and Tolerance. *Journal of Economic Geography* 8, pp. 615–649.
- FRENETTE, M. (2004), Access to College and University: Does Distance to School Matter? *Canadian Public Policy/Analyse de Politiques* 30, pp. 427–443.
- FRENETTE, M. (2006), Too Far To Go On? Distance to School and University Participation. *Education Economics* 14, pp. 31–58.
- GAREIS, P., C. DILLER & H. HUCHTHAUSEN (2018), Braindrain und Bologna-Drain—Räumliche Implikationen der Bologna-Reform und Auswirkungen auf ländliche Räume. Eine Analyse am Beispiel der Justus-Liebig-Universität Gießen. *Raumforschung und Raumordnung | Spatial Research and Planning* 76, pp. 281–296.
- GIBBONS, S. & A. VIGNOLES (2012), Geography, Choice and Participation in Higher Education in England. *Regional Science and Urban Economics* 42, pp. 98–113.
- GOOGLE (2018), *Google Maps*. Available at <<https://www.google.com/maps>>. Accessed on 18 December 2020.
- HALLER, A.O. & A. PORTES (1973), Status Attainment Processes. *Sociology of Education* 46, pp. 51–91.
- HAN, P. (2014), A Literature Review on College Choice and Marketing Strategies for Recruitment. *Family and Consumer Sciences Research Journal* 43, pp. 120–130.
- HAUSSEN, T. & S. UEBELMESSER (2018), No Place Like Home? Graduate Migration in Germany. *Growth and Change* 49, pp. 442–472.
- HEINE, C. (2012), *Übergang vom Bachelor- zum Masterstudium*. Hannover: HIS: Forum Hochschule 7/2012. Available at <http://www.his.de/pdf/pub_fh/fh-201207.pdf>. Accessed on 25 March 2019.
- HILLMAN, N.W. (2016), Geography of College Opportunity: The Case of Education Deserts. *American Educational Research Journal* 53, pp. 987–1021.
- HOLDSWORTH, C. (2009), ‘Going Away to Uni’: Mobility, Modernity, and Independence of English Higher Education Students. *Environment and Planning A* 41, pp. 1849–1864.
- HRK (2018), *Statistiken zur Hochschulpolitik 1/2018*. Available at <https://www.hrk.de/fileadmin/redaktion/hrk/02-Dokumente/02-06-Hochschulsystem/Statistik/HRK_Statistik_BA_MA_UEbrige_WiSe_2018_19.pdf>. Accessed on 20 December 2020.
- HRK (2019), *Hochschulliste*. Available at <<https://www.hochschulkompass.de/hochschulen/downloads.html>>. Accessed on 19 December 2020.
- INKAR (2018), *INKAR Database*. Available at <<https://www.inkar.de/>>. Accessed on 25 March 2019.
- JAEGER, A. & J. KOPPER (2014), Third Mission Potential in Higher Education: Measuring the Regional Focus of Different Types of HEIs. *Review of Regional Research* 34, pp. 95–118.
- KAISER, N. & M. RUDEL (2018), Hochschulwechsel auf dem Weg zum Masterstudium? Der Einfluss situativer Rahmenbedingungen auf die regionale Mobilität von Bachelorabsolventen. *Soziale Welt* 69, pp. 293–318.
- KRABEL, S. & C. FLÖTHER (2014), Here Today, Gone Tomorrow? Regional Labour Mobility of German University Graduates. *Regional Studies* 48, pp. 1609–1627.
- KRAWIETZ, M. (2008), Studentische Mobilität in Deutschland—der Einfluss der Neuen Studiengänge Bachelor und Master. *Bildung und Erziehung* 61, pp. 387–412.
- KRETSCHMANN, J., A. GRONOSTAJ, A. SCHULZE & M. VOCK (2017), Wenn sich die Masterfrage stellt: Soziale Herkunftseffekte auf die Übergangsentention nach dem Bachelorstudium. *Zeitschrift für Empirische Hochschulforschung* 1, pp. 76–92.
- LEWIN, D. & P. PASTERNAK (2007), Studium und Studierende: Analyse und Prognose. In: P. Pasternack, ed., *Stabilisierungsfaktoren und Innovationsagenturen. Die ostdeutschen Hochschulen und die zweite Phase des Aufbau Ost*, pp. 197–226. Leipzig: Akademische Verlagsgesellschaft.
- LÖRZ, M., H. QUAST & J. ROLOFF (2015), Konsequenzen der Bologna-Reform: Warum bestehen auch am Übergang vom Bachelors Masterstudium soziale Ungleichheiten?/Consequences of the Bologna-Reform: Why Do Social Differences Exist at the Transition from Bachelor to Master Degree Programs? *Zeitschrift für Soziologie* 44, pp. 137–155.
- LOURENÇO, D. & C. SÁ (2019), Spatial Competition for Students: What Does (Not) Matter? *The Annals of Regional Science* 63, pp. 147–162.
- MOLLICA, C. & L. PETRELLA (2017), Bayesian Binary Quantile Regression for the Analysis of Bachelor-to-Master Transition. *Journal of Applied Statistics* 44, pp. 2791–2812.
- MOSCHNER, B. (2010), Möglichkeiten und Grenzen in modularisierten Studiengängen.

- In: U. Eberhardt, ed., *Neue Impulse in der Hochschuldidaktik*, pp. 25–43. Wiesbaden: VS Verlag für Sozialwissenschaften.
- NEUGEBAUER, M., S. NEUMEYER & B. ALESI (2016), More Diversion Than Inclusion? Social Stratification in the Bologna System. *Research in Social Stratification and Mobility* 45, pp. 51–62.
- OGGENFUSS, C. & S.C. WOLTER (2019), Are They Coming Back? The Mobility of University Graduates in Switzerland. *Review of Regional Research* 39, pp. 189–208.
- PATERNOSTER, R., R. BRAME, P. MAZEROLLE & A. PIQUERO (1998), Using the Correct Statistical Test for the Equality of Regression Coefficients. *Criminology* 36, pp. 859–866.
- PERNA, L.W. (2006), Studying College Access and Choice: A Proposed Conceptual Model. In: J.C. Smart, ed., *Higher Education: Handbook of Theory and Research*, vol 21, pp. 99–157. Dordrecht: Springer.
- PSYCHARIS, Y., V. TSELIOS & P. PANTAZIS (2019), Interregional Student Migration in Greece: Patterns and Determinants. *Revue d'Economie Regionale Urbaine* 2019, pp. 781–812.
- RDC - GERMAN MICRODATA LAB OF THE FEDERAL STATISTICAL OFFICE AND STATISTICAL OFFICES OF THE FEDERAL STATES (2019), Statistics of Students, Survey Year(s) [1995-2015], Own Calculations. doi:<https://doi.org/10.21242/21311.1995-2015>.12.00.1.1.0.
- REHN, T.G., G. BRANDT, G. FABIAN & K. BRIEDIS (2011), *Hochschulabschlüsse im Umbruch. Studium und Übergang von Absolventinnen und Absolventen reformierter und traditioneller Studiengänge des Jahrgangs 2009*. Hannover: HIS.
- SÁ, C., R.J. FLORAX & P. RIETVELD (2004), Determinants of the Regional Demand for Higher Education in the Netherlands: A Gravity Model Approach. *Regional Studies* 38, pp. 375–392.
- SCHUSTER, K., F. HEES & S. JESCHKE (2013), Diploming Rest in Peace? The Implementation of the Bologna Process in Germany's Engineering Education. In: S. Jeschke, I. Isenhardt, F. Hees, & K. Henning, eds., *Automation, Communication and Cybernetics in Science and Engineering 2011/2012*, pp. 423–431. Berlin, Heidelberg: Springer.
- SJAASTAD, L.A. (1962), The Costs and Returns of Human Migration. *Journal of Political Economy* 70, pp. 80–93.
- SPIESS, C.K. & K. WROHLICH (2010), Does Distance Determine Who Attends a University in Germany? *Economics of Education Review* 29, pp. 470–479.
- SUHONEN, T. (2014), Field-of-Study Choice in Higher Education: Does Distance Matter? *Spatial Economic Analysis* 9, pp. 355–375.
- TOSI, F., R. IMPICCIATORE & R. RETTAROLI (2019), Individual Skills and Student Mobility in Italy: A Regional Perspective. *Regional Studies* 53, pp. 1099–1111.
- TURNER, G. (2019), How the Bologna Process has Affected the German University System. *Innovation: The European Journal of Social Science Research* 32, pp. 513–515.
- UNGER, J.M., A. RAUCH, M. FRESE & N. ROSENBUSCH (2011), Human Capital and Entrepreneurial Success: A Meta-Analytical Review. *Journal of Business Venturing* 26, pp. 341–358.
- VENHORST, V., J. VAN DIJK & L. VAN WISSEN (2010), Do the Best Graduates Leave the Peripheral Areas of the Netherlands? *Tijdschrift Voor Economische En Sociale Geografie* 101, pp. 521–537.
- Vrontis, D., A. Thrassou & Y. Melanthiou (2007), A Contemporary Higher Education Student-Choice Model for Developed Countries. *Journal of Business Research* 60, pp. 979–989.
- WAKELING, P. & K. JEFFERIES (2013), The Effect of Tuition Fees on Student Mobility: The UK and Ireland as a Natural Experiment. *British Educational Research Journal* 39, pp. 491–513.
- WEISSER, R.A. (2020), How Personality Shapes Study Location Choices. *Research in Higher Education* 61, pp. 88–116.
- WIELGOSZEWSKA, B. (2018), Onwards and Upwards? Migration and Social Mobility of the UK Graduates. *Regional Studies, Regional Science* 5, pp. 402–411.
- WINTERS, J.V. (2011), Human Capital and Population Growth in Nonmetropolitan US Counties: The Importance of College Student Migration. *Economic Development Quarterly* 25, pp. 353–365.
- ZEIT CAMPUS (2020), *CHE-Ranking*. Available at <<https://ranking.zeit.de/che/de/ueberdasranking/index>>. Accessed 09 July 2020.

SUPPORTING INFORMATION

Additional supporting information may be found in the online version of this article at the publisher's web site:

Supplementary Material