

Gifts From Around the World. JLU as an International Partner



Student exhibition project in the course “Knowledge Transfer: Exhibition Practice” under the direction of Dr. Alissa Theiß and Prof. Dr. Cornelia Weber

Participants:

Beyza Basaran, Liv Behrens, Luana Celentani, Evelyn Fröhlich, Jana Hammer, Lena Heinstadt, Lea Jainta, Daniel Kauffeld, Emma-Marie Magiera, Natalie Rempel, Fabian Seelbach, Justin Seib, Noa-Kristin Strunk, Noah Leander Tigges

Welcome to the exhibition “Gifts From Around the World. JLU as an International Partner”!

We are pleased to welcome you to our exhibition. This exhibition presents a selection of gifts presented to Justus Liebig University by universities around the world. The tradition of giving hospitality gifts has a long history and was already an established custom in ancient Greece. Hospitality (philoxenia) was considered a valuable commodity because travellers were often dependent on being offered shelter and hospitality. Gifts were also often given to show respect and maintain contact. The Homeric epics bear witness to this practice and emphasise the importance of hospitality in many central scenes. Today, it is common for universities to cooperate internationally and occasionally exchange gifts. This is ultimately done for the same reasons as in ancient times: to strengthen mutual cooperation and bonding. The variety of guest gifts collected over the years is remarkable. They are often presented by the rector of a university, but sometimes also by institutes or individuals. The gifts range from simple items such as business card holders, printed T-shirts and commemorative coins to unique and more exotic objects such as those on display in this exhibition – often with a connection to the culture of the country of origin. All gifts become part of the university's collection once they have been handed over. Even personal gifts to institute rectors find their place here, as university staff are not allowed to accept gifts over a certain value. Some of the most fascinating gifts were prepared by students during two events and are now on display here. However, this exhibition only shows a fraction of the collection, which totals more than one hundred gifts.

We cordially invite you to discover the diversity and the stories behind these gifts. We wish you an inspiring and enriching time exploring the exhibition.

Your exhibition team

Focus Region Eastern Europe

High cabinets

Ostrich egg with city views of Kazan

Inv. no. UAG, Slg. Gastgeschenke, Nr. 107
H. 28 cm, w. 15 cm; painted ostrich egg
Kazan, Tatarstan, Russia, 1999

The hand-painted ostrich egg was presented to JLU as a gift and symbol of fertility on the occasion of the tenth anniversary of the partnership with the University of Kazan. It shows city views with sights of Kazan. Initial contact with Kazan University dates back to 1984 and the partnership agreement was signed in Kazan on October 16, 1989 – before the fall of the Berlin Wall. A lively annual exchange of around 100 people (students, doctoral students, lecturers) and numerous joint research projects have resulted from the partnership. However, the partnership has been suspended since February 2022 as a result of the Russian attack on Ukraine.



Vase with city views of Kazan

Inv. no. UAG, Slg. Gastgeschenke, Nr. 108
H. 53.5 cm, w. 20 cm; wood
Kazan, Tatarstan, Russia

Vessel *cu perle*

Inv. no. UAG, Slg. Gastgeschenke, Nr. 41
H. 17.5 cm, ø max. 7.8 cm; wood, wax, glass beads
University of Iași, Institutul Agronomic, Romania, 1982



The vessel, possibly a vase, is made of wood and covered with a layer of wax into which beads have been pressed. This technique (*cu perle*, "with beads") is used in various regions of Romania to decorate traditional costumes, Easter eggs and other objects. Traditional Romanian motifs such as geometric patterns, floral motifs and cultural symbols are often incorporated.

The vessel was presented to the University of Giessen on the occasion of its 375th anniversary by the Agricultural Institute of the University of Iași (Romania) in 1982 and bears an inscription with the name of the then President of the University of Giessen, Karl Alewell (term of office 1978-1986).

Document (letter of thanks)

Inv. no. UAG, Slg. Gastgeschenke, Nr. 67
Document: h. 45 cm, w. 30 cm, Seal: ø 6.8 cm; parchment, ink, coloured print, wax with synthetic fibers
University of Iași, Institutul Agronomic, Romania, 1982

This certificate was presented together with the wooden vessel *cu perle* on the occasion of the 375th anniversary of Justus Liebig University Giessen in 1982 by the Agricultural Institute of the University of Iași (Romania). Written in Latin, it expresses greetings and congratulations, recognises the scientific merits of the University of Giessen and emphasises the friendship and cooperation between the two universities. The certificate bears the signature of the then Rector of the Institute, Prof. Dr. Costachi Teșu.

Translation:

**WE,
RECTOR AND SENATE,
OF THE AGRICULTURAL INSTITUTE OF IAȘI, DEDICATED TO THE MEMORY OF
IOANNIS IONESCU DE LA BRAD, SEND OUR BEST WISHES AND
CONGRATULATIONS TO THE EXCELLENT UNIVERSITY OF GIESSEN, NAMED
AFTER JUSTUS LIEBIG, ON THE OCCASION OF ITS 375TH ANNIVERSARY.**

We are well aware that the University of Giessen, which can boast of the most outstanding minds, among whom the well-known Justus Liebig is one of the foremost, has achieved immortal merits through so many centuries of cultivating and promoting science in Germany and throughout the world.

We are convinced that the professors and young students of our universities, who have been united by an ever closer bond of co-operation, will contribute to the strengthening of the friendship between our universities and peoples through similar and frequent meetings for science.

Therefore, on the occasion of this great anniversary, we wish that the well-known University of Giessen, which has been dedicated to the memory of Justus Liebig and which helps its fatherland to pride and splendour, will continue to progress with the best results in the years to come and serve the progress of mankind and the preservation of peace through research and science.

We, the Rector and the Senate of the Agricultural Institute of Iași, wish and pray from the bottom of our hearts all the best, happiness, success and prosperity to the great Rector, the erudite professors and the young students of the University of Giessen.

**LONG LIVE, GROW AND FLOURISH THE RENOWNED UNIVERSITY OF
GIESSEN,
MAY IT BEAR RICHER FRUIT DAY BY DAY!**

Given in Iași, in the month of May, in the year 1982.
Agricultural Institute of Iași
Rector
Professor Dr Costachi Teșu

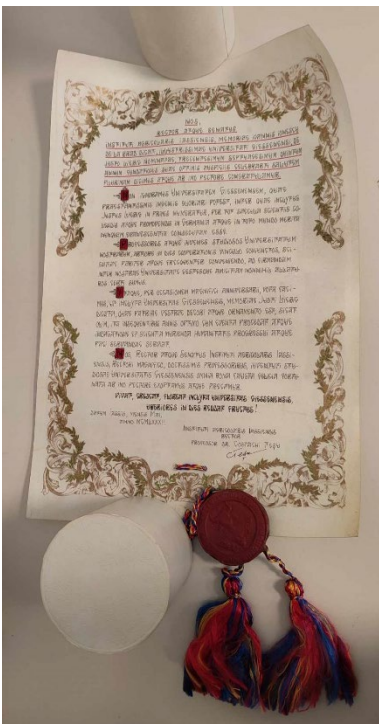


Table cabinets

Bulava (mace/official staff)

Inv. no. UAG, Slg. Gastgeschenke, Nr. 26
L. 48.5 cm; wood
Ukraine



The bulava was already widespread in Eastern Europe and today's Ukraine in the 13th century and served as the "staff of office" of the Cossack leader, the hetman. Cossacks, free equestrian and peasant organizations in the southern steppe regions of Eastern Europe, play an important role in the self-identification of today's Ukraine. Even in the early modern period, decorated maces were a popular gift between princes as an expression of recognition and dignity. Today, wooden bulavas are popular, widespread gifts and souvenirs in Ukraine. The memory of the hetman state lives on in post-Soviet Ukraine: since 1991, all presidents have held up a bulava at their inauguration. It symbolizes authority, the heritage of Cossackism and the freedom and independence of Ukraine.

Commemorative coin Kyiv-Mohyla Academy

Inv. no. UAG, Slg. Gastgeschenke, Nr. 97
ø 3.5 cm; silver

National University of Kyiv-Mohyla Academy, Ukraine, 2015



This commemorative coin was minted to mark the 400th anniversary of Kyiv-Mohyla University. Its motto translates as "Time is running, the academy is eternal" and refers to its eventful history. Founded in 1615, Russian became the language of instruction under the Russian tsars in 1765. Tsar Alexander I had the university closed in 1817. In 1918, it was dissolved under the Soviet Union and its buildings handed over to the navy. It was not until 1992 that the university was reopened in independent Ukraine.

The partnership agreement between JLU and the Kyiv-Mohyla Academy has been in place since June 17, 2022.

Commemorative coin Charles University

Inv. no. UAG, Slg. Gastgeschenke, Nr. 71
ø 4 cm; silver

Charles University of Prague, Czech Republic



The obverse of the commemorative coin shows the coat of arms of Charles University in Prague, which was founded in 1348, making it one of the oldest universities in the world. The university coat of arms is an exact copy of the wax seal of the founding charter. The founder was the Roman-German King Charles IV, who is depicted here kneeling on the left. In front of him stands St. Wenceslas, the patron saint of Bohemia, whose day of death is still a public holiday in the Czech Republic. In the Middle Ages, the Kingdom of Bohemia belonged to the Holy Roman Empire. This is why many Roman-German kings were also rulers of Bohemia.

The cooperation agreement between JLU and Charles University was signed on June 17, 2009.

Medal Gödöllő

Inv. no. UAG, Slg. Gastgeschenke, Nr. 12
H. 10.5 cm, w. 11 cm; copper
Gödöllő, Hungary



The coat of arms on the inside of the box is the coat of arms of the town of Gödöllő that was in use before 1990. It shows a heraldic pelican as a heraldic animal with three young birds. In heraldry, the pelican resembles a swan or an eagle rather than a natural pelican. It is often depicted with its breast carved open to feed its young with its blood, symbolizing self-sacrifice and charity.

The town twinning between Gödöllő and Giessen was signed on October 22, 1988. The foundation stone of this partnership lay in the many years of intensive relations between JLU and the Agricultural University of Gödöllő.

Plate with the coat of arms of the Oskar Lange Academy of Economics

Inv. no. UAG, Slg. Gastgeschenke, Nr. 18
ø 31.4 cm; porcelain
Wroclaw University of Economics and Business, Poland



Medal of the University of Łódź with certificate

Inv. no. UAG, Slg. Gastgeschenke, Nr. 53
H. 7 cm, w. 6.7 cm; metal
University of Łódź, Poland

The medal and certificate of the University of Łódź were awarded to the former President of JLU professor Heinz Bauer (term of office 1987-1997). The obverse bears the inscription: "Uł w służbie społeczeństwu i nauce" (In the service of society and science). On the left is the coat of arms of the city of Łódź (wooden boat with rudder), on the right the coat of arms of the People's Republic of Poland (uncrowned eagle). JLU has had a partnership with the University of Łódź since November 3, 1978. This is of great importance for the Department of Eastern European History and the Chair of Holocaust and Camp Literature at JLU.

Plate with the coat of arms of Łódź

Inv. no. UAG, Slg. Gastgeschenke, Nr. 9
ø 27.5 cm; metal
Łódź, Poland

The coat of arms of Łódź has been preserved on a seal for the year 1577. It is assumed that the plate on display here was minted to mark the 400th anniversary of the coat of arms. A boat with a rudder still adorns the town's coat of arms today.

In 1940, the German occupiers set up the Łódź/Litzmannstadt ghetto in the city of Łódź. It was one of the largest and longest-running concentration camps in the Third Reich. Most of the Jews interned there were eventually murdered in the Kulmhof and Auschwitz-Birkenau extermination camps. These circumstances underline the importance of JLU's partnership with the University of Łódź.

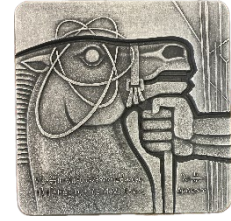


Plaque of the National Research Nuclear University MEPHI

Inv. no. UAG, Slg. Gastgeschenke, Nr. 42

10 cm x 10 cm; metal

National Research Nuclear University MEPHI, Moscow, Russia



The metal plaque shows a horse's head held on the reins by a hand clenched into a fist: the MEPHI logo. The three ellipses orbiting the eye of the horse can be read as electron orbits, with the horse's eye acting as an atomic nucleus, symbolizing nuclear physics. The longer physical equation in the horse's neck of the plaque is the Schrödinger equation, the shorter formula is the Heisenberg uncertainty relation. The inscription on the back of the plaque reads in Cyrillic: "50 years of MEPHI". A laurel wreath is also depicted. The laurel wreath is a symbol of the successful existence of the research university. According to this, the plaque dates from 1992, as the National Research Nuclear University was founded in 1942.

Birch bark box

Inv. no. UAG, Slg. Gastgeschenke, Nr. 1

H. 6.3 cm, w. 12.5 cm; birch bark

Novosibirsk, Russia, 2007



The coat of arms of the city of Novosibirsk can be seen on the lid of the birch bark box. Below it we find the city name Новосибирск in Cyrillic script and the year it was founded, 1893. The birch is considered the national tree in Russia, where it is even attributed sacred properties. Birch bark is waterproof and airtight, flexible and very durable. This is why containers made from this material are often used to store food. To make such a box, the shape is first outlined on the bark with an awl and then cut out with a knife. For the decorations on the surface, lines are incised, patterns are punched in with an awl or embossed using a hardwood or metal mold. The birch bark box probably came to Giessen as a gift for JLU's 400th anniversary celebrations in 2007.

The JLU Institute of Physics worked together with the Budker Institute of Nuclear Physics of the Russian Academy of Sciences in Novosibirsk as part of an EU program. The collaboration was halted due to the Russian invasion of Ukraine in February 2022.

Medal of the Friedrich Schiller University Jena

Inv. no. UAG, Slg. Gastgeschenke, Nr. 49

∅ 3.8 cm; porcelain

Friedrich Schiller University Jena, Germany, 1974/1990

The obverse shows the profile of Friedrich Schiller (1759-1805), his name and "JENA 1789-1799". During this period, Schiller was a professor of philosophy in Jena, but taught primarily as a historian. In March 1797, Schiller acquired a garden house in Jena, which can be seen on the reverse of the medal. He spent the summers there with his family until 1799. Johann Wolfgang Goethe (1749-1832) was also a frequent guest in Schiller's garden. The medal was produced in 1974 on the occasion of Friedrich Schiller's 215th birthday on behalf of the Friedrich Schiller University Jena. On the reverse of the casket we find the date January 14/15, 1990 in handwriting. It indicates that the medal was presented to the JLU as a gift on the occasion of the German reunification.



Gifts from Eurasia

Kazan University plaque

Inv. no. UAG, Coll. gifts, no. 44
H. 6 cm, W. 9 cm; marble, metal
Kazan State University, Tatarstan, Russia



Lenin plaque from the University of Kazan

Inv. no. UAG, Slg. Gastgeschenke, Nr. 58
H. 9 cm, w. 6 cm; marble, metal
Kazan State University, Tatarstan, Russia, 1991



Soviet medal in acrylic glass

Inv. no. UAG, Slg. Gastgeschenke, Nr. 62
H. 8 cm, w. 8 cm; metal, acrylic glass
Almaty, Kazakhstan, 1991



Commemorative coin for the 200th anniversary of the University of Kazan

Inv. no. UAG, Slg. Gastgeschenke, Nr. 88
ø 6 cm; metal
Kazan State University, Tatarstan, Russia, 2004



Gifts from Kazan

The “Lenin Plaque of Kazan University” shows Lenin as a young student. It was produced for the 175th anniversary of Kazan University. The large model for the exhibited object, the monument to Lenin as a university student, is located centrally in front of the main building of Kazan University. In December 1887, Lenin played a significant role in student unrest. After the protest, he was suspended from the university and sent into exile. On November 23, the 150th anniversary of the university, the Lenin statue was erected.

The exhibition also includes a plaque showing the main building of Kazan University, a commemorative coin marking the 200th anniversary of Kazan University, a large wooden vase with carvings of Kazan sights, and an ostrich egg painted with views of the city.

The partnership with Kazan University has existed since October 16, 1989, but is currently suspended as a result of the Russian attack on Ukraine.

Framed tile

Inv. no. UAG, Slg. Gastgeschenke, Nr. 79
H. 32.5 cm, w. 26 cm; glazed ceramic
Faculty of Law, Istanbul University, Turkey



The framed tile is a gift to JLU from the Faculty of Law at Istanbul University. The tile depicts a peacock surrounded by flowers. Since 2009, there has been an institutional partnership between the JLU Law Department and the Faculty of Law at Istanbul University, the oldest law faculty in Turkey. The partnership enables JLU law students to study in Istanbul as part of the Erasmus program. On June 17, 2022, a Memorandum of Understanding was also concluded with Istanbul University, which facilitates exchanges for students of all subjects.

Set of letter opener and bookmark

Inv. no. UAG, Slg. Gastgeschenke, Nr. 98
Letter opener: l. 17 cm, w. 3 cm; silver-plated metal, ceramic
Bookmark: l. 14 cm, w. 3 cm; silver-plated metal, ceramic
Bursa, Turkey



The gift set was produced by the Turkish company Anikya İznik Çin. The pair of a letter opener and a bookmark are decorated with a tile showing a red carnation. The colorful design is typical for the İznik ceramic tiles from the Turkish province of Bursa. These tiles were popular in the Ottoman Empire since the 7th century and have been in use until the 17th century. The objects thus tie in with the tradition of handmade, colorful ceramic tiles. A modern interpretation creates a link to traditional Turkish craftsmanship. Their cooperation agreement between Uludağ University in Bursa and JLU exists since December 15, 1998.

Whip (*kamshy*)

Inv. no. UAG, Slg. Gastgeschenke, Nr. 25
L. 40 cm; wood, rawhide, sheet metal, leather
Kazakhstan



This single-stranded whip, which probably originated in Kazakhstan, has great symbolic significance. It represents harmony, fertility and leadership. At the cradle ceremony, which takes place on the third day after the birth, it is hung above the child's bed together with a knot. The whip also refers to the traditional horse races (*baiga*) in Kazakhstan. Horse racing and equestrian games are considered a national sport and underline the central role of the horse in Kazakh culture.

Bottle with sand painting

Inv. no. UAG, Slg. Gastgeschenke, Nr. 86
H. 15 cm, w. 9 cm; glass bottle filled with colored sand
University of Aleppo, Syria



Sand paintings in bottles are popular souvenirs from desert regions. The artisans use a curved stick and a funnel with a long spout for the sand painting. They fill different colored sand into the bottle in layers. For the dromedary in this bottle, dark sand was pressed into a round shape with a stick, the sand was then

pulled down for the legs and to the side for the neck. In the next step light-colored sand is poured into the bottle and the picture is pressed down firmly. The name Julia on the sand painting shows that it was a gift to Julia Volz, head of the International Office at JLU. The Syrian geographer Hussein Almohamad gave it to her in order to thank her for her support. Professor Almohamad had to leave his country in 2013 because of the war. He has been a visiting professor at the Institute of Geography at JLU since 2014.

Gifts from Asia

Entrance Hall

Palace lantern

Inv. no. UAG, Slg. Gastgeschenke, Nr. 66
H. 41.5 cm, w. 40.5 cm, plastic
Northwestern Agricultural and Forestry Science and Technology
University Yangling, Xianyang, China, 1983



High cabinet

Raksha mask

Inv. no. UAG, Slg. Gastgeschenke, Nr. 82
W. 26 cm, h. 20 cm; Holz
Universität Colombo, Sri Lanka

The tradition of Kolam dances has existed in Sri Lanka for centuries. During these performances, the dancers wear various wooden masks, including Raksha masks. These represent 24 demons, which are supposed to ward off the evil associated with them through their apotropaic effect. The mask on display here embodies the fire demon Ginidal-Raksha, who wards off anger and fire. The masks are made in the coastal town of Ambalangoda from the wood of the Vel Kadurus, the nux vomica tree, which grows mainly in swampy areas. The manufacturing process involves several steps and takes many weeks. Natural pigments from local plants and minerals are used to color the carved mask. Finally, the mask is sealed with beeswax. The cooperation agreement between the University of Colombo in Sri Lanka and JLU has been in place since April 27, 2017.



Matcha whisk (*Chasen*)

Inv. no. UAG, Slg. Gastgeschenke, Nr. 74
H. 13 cm; bamboo
Nara Institute of Science and Technology, Ikoma, Japan

Matcha is green tea in powder form. The origins of matcha lie in China, where the tea ceremony can be traced back to the 6th century. Green tea was produced there as a medicine in Buddhist monasteries. The tea plant found its way to Japan in the 12th century. In the



traditional production of matcha, hot water is poured over the powdered green tea leaves in a bowl and whisked with a bamboo whisk, known as a chasen, until frothy. The city of Takayama in Gifu Prefecture is known for producing high-quality matcha whisks using traditional craftsmanship. The guest gift comes from Nara University in Japan, which organizes tea ceremonies for exchange students to keep this tradition alive and share it with others.

JLU has had an exchange agreement with the Nara Institute of Science and Technology in Ikoma since July 3, 2017.

The Apothegm Of Analects Of Confucius – Silk book

Inv. no. UAG, Slg. Gastgeschenke, Nr. 73

H. 22 cm, w. 14 cm; silk, textile, paper

University of International Business and Economics, Peking, China



Bilingual collector's edition (Chinese/English) of a collection of sayings by Confucius: "The Apothegm Of Analects Of Confucius" printed on silk. The Analects are collections of philosophical quotations and teachings attributed to Confucius and probably compiled by his students during the Warring States period (c. 475–221 BC). It tells of morality, virtue, politics and the priority of education. During the Han Dynasty (c. 206 BC–220 AD), they served as a state ideology and henceforth as a model for governments and individuals. They thus shaped Chinese history and civilization.

Printing on silk underlines the importance of traditional Chinese craftsmanship.

According to legend, the production of silk was discovered in China in the 3rd century BC and China is still considered the largest silk producer in the world today. The issue also includes two collector's stamps issued by the Confucius Institute in 2012.

Table cabinet

Brocade picture with dragon

Inv.no. UAG, Slg. Gastgeschenke, Nr. 80

L. 27 cm, w. 23 cm, h. 2 cm; silk, brocade

Sichuan University, Chengdu, China



On display is a picture of a dragon (*long*) in traditional Chinese weaving technique. This technique is recognized by UNESCO as an intangible cultural heritage of humanity. It consists of a complex process that originated in the Yuan Dynasty around 1300. Silk and gold threads were used to create our picture. On the packaging it says "One inch brocade, one inch gold". The materials and technique used make the "Nanjing Yunjin Brocade" very valuable. In former times, it was reserved exclusively for the elites. The production process requires the cooperation of two people for the exchange and passing of the threads on the top and bottom of the fabric. Here a parallel could be drawn with the reciprocal production of knowledge between Sichuan University and JLU, who signed their cooperation agreement in 2016.

Two medals „Lovable Giant Panda“

Inv.no. UAG, Slg. Gastgeschenke, Nr. 45 and 59
ø 5 cm; metal
China



Brocade Picture with two pandas in classic Shu embroidery

Inv.-Nr. UAG, Slg. Gastgeschenke, Nr. 68
L. 21 cm, w. 21 cm, h. 5 cm; silk, brocade
Sichuan University, Chengdu, China



Pandas as Ambassadors

“Lovable Giant Panda - China” is the inscription on the bronze medals shown here. The lovable fluffy bears are a beautiful theme for a gift that also symbolizes happiness and peace.

In our collection, we have to make do with images of pandas, but the practice of giving real pandas as gifts does exist and has a long tradition in China. This practice, also known as “panda diplomacy”, dates back to the 7th century. It reached its peak during the Cold War. In 1980, the former Chancellor of Germany Helmut Schmidt donated a pair of pandas to Berlin Zoo. He had received them as a state gift from China. As an exclusive national animal, the Chinese panda has immense diplomatic appeal. The panda gifts can function both as proof of loyalty and as political instrument.

Gilded brass tableware set

Inv. no. UAG, Slg. Gastgeschenke, Nr. 101
L. 17.5 cm, w. 17.5 cm, h. 7 cm; gilded brass
Moradabad, Uttar Pradesh, India



The gilded brass set from Moradabad comprises a spoon, a bowl and a small tray. Each piece is plated with 24-carat gold. The brass objects are produced in sand casting process. The artisans decorate the items with magnificent patterns by engraving and embossing. In India, gifting sets of tableware made of precious metals is deeply rooted in the culture. Traditionally, richer families used gold or silver plates on special occasions. The gilded brass gift set shown here displays the ornate decorations of Indian craftsmanship and combines them with the historical use of precious metal tableware. The precious set was a gift to the International Office of the JLU.

Pair of elephants

Inv. no. UAG, Slg. Gastgeschenke, Nr. 75
L. 8 cm, w. 5 cm, h. 3 cm; Marble with inlays
University of Colombo, Sri Lanka



Gifts from Africa

Painting of a coffee ceremony

Inv. no. UAG, Slg. Gastgeschenke, Nr. 109

H. 58 cm, w. 37.5 cm; acrylic on canvas, plastic frame

University of Hawassa, Ethiopia

The painting, which depicts a coffee ceremony, probably comes from the University of Hawassa in Ethiopia. It was painted with acrylic on canvas and framed in an ornate plastic frame.

The Habesha coffee ceremony is a central cultural ritual in Ethiopia, reflecting the country's long tradition of coffee cultivation and consumption. This ceremony, also known as *buna*, involves the roasting, grinding and brewing of coffee beans and is the focus of community gatherings. The ceremony is often performed three times a day and serves to welcome guests and promote community. It is a sign of respect and friendship and provides an opportunity to discuss topics such as politics and community issues. The coffee ceremony also emphasizes the spiritual and cultural importance of coffee in Ethiopia.



Plate „Ethiopia“

Inv. no. UAG, Slg. Gastgeschenke, Nr. 83

H. 16.5 cm, w. 12 cm; fabric, sheet metal, paper

Ethiopia



Gifts from America

Gargoyle figure

Inv. no. UAG, Slg. Gastgeschenke, Nr. 106

H. 27 cm, w. 16 cm; resin

University of Wisconsin-Madison Law School, USA, 2018

The figure is a replica of a sandstone gargoyle that originally adorned the historic University of Wisconsin Law School building. When the 1893 building had to be demolished in the 1960s, the gargoyle was given a place of honor in the atrium of the new building and has become the faculty's mascot. He is the namesake of the alumni magazine, adorns the front page of the Wisconsin Law Review and can be found on numerous Law School merchandise items such as ties, coffee mugs, T-shirts, and watches. The figure on display is a gift for the anniversary of the 35-year partnership between the University of Wisconsin-Madison Law School and JLU in 2018. The shield, which is not inscribed on the original gargoyle figure, says "University of Wisconsin Law School 1868".



Soft toy goat Seneca big

Inv. no. UAG, Slg. Gastgeschenke, Nr. 104
H. 40 cm, w. 15 cm; plush, fleece (polyester)
Universidad de los Andes, Bogotá, Colombia

Soft toy goat Seneca small

Inv. no. UAG, Slg. Gastgeschenke, Nr. 105
H. 30 cm, w. 9 cm; plush, fleece (polyester)
Universidad de los Andes, Bogotá, Colombia



The two soft toy goats represent the mascot of the Universidad de los Andes in Bogotá. As early as 1949, shortly after the university had opened, professors and students noticed a goat that felt at home on campus. It accompanied the university staff and students into the classrooms. Sometimes it even ate volumes or exercise books. Soon everyone had taken the droll goat to their hearts. It was christened Seneca, after the Roman philosopher. The billy goat spent his entire life on campus. After his death in 1966, the university immortalized him on logos, in seals and on merchandise products Universidad de los Andes and JLU signed their cooperation agreement in 1967. The partnership was concludes on October 6, 2021.

Pictures:

P. 1: Katrina Friese

Pp. 3-14: Exhibition team